

Anti-SLCO1A1 Polyclonal Antibody

Product Details

Ig Type: IgG
Reactivity: Mouse (predicted:Rat)
Molecular Weight: Theoretical: 74 kDa. Actual: 73 kDa.
Purification: Protein A purified

Applications

1. Tissue/cell: mouse kidney tissue; 4% Paraformaldehyde-fixed and paraffin-embedded; Antigen retrieval: citrate buffer (0.01M, pH6.0), Boiling bathing for 15 min; Block endogenous peroxidase by 3% Hydrogen peroxide for 30 min; Blocking buffer (normal goat serum) at 37°C for 20 min; Incubation: Anti-OATP-1/Slco1a1 Polyclonal Antibody, Unconjugated (TMAB-01731) 1:200, overnight at 4°C, followed by conjugation to the secondary antibody and DAb staining.

Verified Activity:

2. Sample:

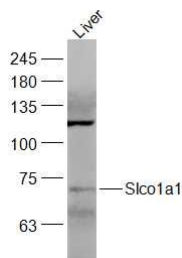
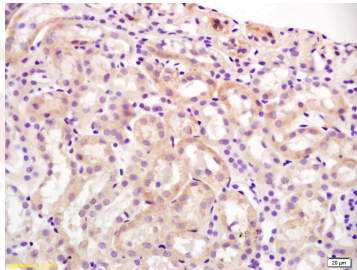
Liver (Mouse) Lysate at 40 µg

Primary: Anti-Slco1a1 (TMAB-01731) at 1/1000 dilution

Secondary: IRDye800CW Goat Anti-Rabbit IgG at 1/20000 dilution

Predicted band size: 74 kDa

Observed band size: 73 kDa



Application: IF,IHC-Fr,IHC-P,WB

Recommended WB: 1:500-2000; IHC-P: 1:100-500; IHC-Fr: 1:100-500; IF: 1:100-500

A DRUG SCREENING EXPERT

Properties

Stability & Storage: Store at -20°C or -80°C for 12 months. Avoid repeated freeze-thaw cycles.

Shipping: Shipping with blue ice.

Antigen Details

Immunogen: KLH conjugated synthetic peptide: rat Slco1a1

Antigen Species: Rat

Gene ID: 50572

Uniprot ID: P46720

Synonyms: Organic anion-transporting polypeptide 1;OATP-1;Solute carrier organic anion transporter family member 1A1;Solute carrier family 21 member 1;Sodium-independent organic anion transporter 1;SO1A1_RAT

Research Background

mediates the transport of sulfated, amidated bile acid, sulfolithocholytaurine, into rat hepatocytes

Inhibitor · Natural Compounds · Compound Libraries · Recombinant Proteins

This product is for Research Use Only · Not for Human or Veterinary or Therapeutic Use

Tel:781-999-4286 E_mail:info@targetmol.com Address:34 Washington Street,Wellesley Hills,MA 02481