

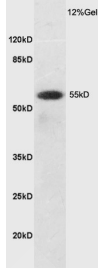
## Anti-SLC7A5 Polyclonal Antibody

### Product Details

|                   |                                      |
|-------------------|--------------------------------------|
| Ig Type:          | IgG                                  |
| Reactivity:       | Human (predicted:Mouse,Rat)          |
| Molecular Weight: | Theoretical: 55 kDa. Actual: 55 kDa. |
| Purification:     | Protein A purified                   |

### Applications

|                    |  |
|--------------------|--|
| Verified Activity: | Sample: Brain (Rat) Lysate at 40 µg  |
|                    | Primary: Anti-SLC7A5 (TMAB-01730) at 1/300 dilution                                    |
|                    | Secondary: HRP conjugated Goat-Anti-rabbit IgG (secondary antibody) at 1/5000 dilution |
|                    | Predicted band size: 55 kDa<br>Observed band size: 55 kDa                              |



|              |                |
|--------------|----------------|
| Application: | WB             |
| Recommended  | WB: 1:500-2000 |

### Properties

|                      |   |
|----------------------|---|
| Stability & Storage: | Store at -20°C or -80°C for 12 months. Avoid repeated freeze-thaw cycles. |
| Shipping:            | Shipping with blue ice.   |

### Antigen Details

|                  |  |
|------------------|--|
| Immunogen:       | KLH conjugated synthetic peptide: human SLC7A5   |
| Antigen Species: | Human  |
| Gene ID:         | 8140   |
| Uniprot ID:      | Q01650   |
| Synonyms:        | CD98LC;LAT1;CD98 light chain;Large neutral amino acids transporter small subunit 1;Solute carrier family 7 member 5;y+ system cationic amino acid transporter;Integral membrane protein E16 (E16);L-type amino acid transporter 1 (hLAT1);MPE16;4F2 light chain (4F2 LC; 4F2LC);SLC7A5 |

### Research Background

L-type amino acid transporter 1 (LAT1) is a multipass-membrane protein responsible for sodium-independent, high-affinity transport of large neutral amino acids. LAT1 functions as a disulfide-linked heterodimer with the amino acid transport protein CD98. LAT1 is expressed predominantly in adult lung and liver but is also expressed in brain,

## A DRUG SCREENING EXPERT

---

thymus, retina, testis, placenta, bone marrow and fetal liver. In the retina, LAT1 localizes to the blood-retinal-barrier (BRB) and mediates L-leucine transport from the blood to the retina. The devastating effects on the brain caused by phenylketonuria are due to the increased levels of LAT1 on the blood-brain-barrier in response to high concentrations of phenylalanine in the blood. LAT1 accepts the amino-acid related anticancer agent melphalan and plays a significant role in cell proliferation, differentiation, and invasion in esophageal squamous cell carcinoma.

**Inhibitor · Natural Compounds · Compound Libraries · Recombinant Proteins**

This product is for Research Use Only · Not for Human or Veterinary or Therapeutic Use

Tel:781-999-4286 E\_mail:info@targetmol.com Address:34 Washington Street,Wellesley Hills,MA 02481