

## Anti-SLC7A11 Antibody (2U673)

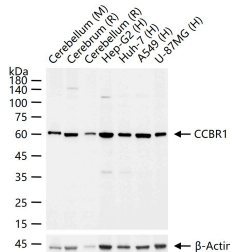
## Product Details

Ig Type:	IgG
Reactivity:	Human,Mouse,Rat
Molecular Weight:	Theoretical: 55 kDa. Actual: 60 kDa.
Clone:	2U673
Purification:	Protein A purified

## Applications

## Verified Activity:

25 µg total protein per Lane of various lysates probed with CCBR1 monoclonal antibody, unconjugated (TMAB-01729) at 1:2000 dilution and 4°C overnight incubation. Followed by conjugated secondary antibody incubation at RT for 60 min.



Application:	ICC/IF,IP,WB
Recommended	WB: 1:500-2000; ICC/IF: 1:50-200; IP: 1:20-50

## Properties

Stability & Storage:	Store at 2°C-8°C for 1 month. Store at -20°C or -80°C for 12 months. Avoid repeated freeze-thaw cycles.
Shipping:	Shipping with blue ice.

## Antigen Details

Immunogen:	A synthesized peptide: human xCT
Antigen Species:	Human
Gene ID:	23657
Uniprot ID:	Q9UPY5
Synonyms:	Solute carrier family 7 member 11;Cystine/glutamate transporter;SLC7A11;xCT;Calcium channel blocker resistance protein CCBR1;Amino acid transport system xc-

## Research Background

Heterodimer with SLC3A2, that functions as an antiporter by mediating the exchange of extracellular anionic L-cystine and intracellular L-glutamate across the cellular plasma membrane. Provides L-cystine for the maintenance of the redox balance between extracellular L-cystine and L-cysteine and for the maintenance of the intracellular levels of glutathione that is essential for cells protection from oxidative stress.

**Inhibitor · Natural Compounds · Compound Libraries · Recombinant Proteins**

This product is for Research Use Only · Not for Human or Veterinary or Therapeutic Use

Tel:781-999-4286 E\_mail:info@targetmol.com Address:34 Washington Street,Wellesley Hills,MA 02481