

Anti-SLC7A11 Polyclonal Antibody

Product Details

Ig Type: IgG
 Reactivity: Human, Mouse, Rat
 Molecular Weight: Theoretical: 55 kDa. Actual: 57 kDa.
 Purification: Protein A purified

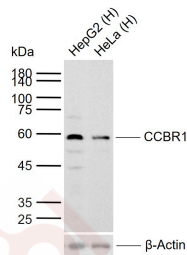
Applications

Sample:

Lane 1: Human HepG2 cell lysates

Lane 2: Human HeLa cell lysates

Verified Activity: Primary: Anti-CCBR1 (TMAB-01728) at 1/1000 dilution
 Secondary: IRDye800CW Goat Anti-Rabbit IgG at 1/20000 dilution
 Predicted band size: 55 kDa
 Observed band size: 57 kDa



Application: WB
 Recommended WB: 1:500-1000

Properties

Stability & Storage: Store at -20°C or -80°C for 12 months. Avoid repeated freeze-thaw cycles.
 Shipping: Shipping with blue ice.

Antigen Details

Immunogen: KLH conjugated synthetic peptide: human xCT/CCBR1
 Antigen Species: Human
 Gene ID: 23657
 Uniprot ID: Q9UPY5
 Synonyms: SLC7A11; Amino acid transport system xc-; Calcium channel blocker resistance protein CCBR1; Solute carrier family 7 member 11; xCT; Cystine/glutamate transporter

Research Background

This gene encodes a member of a heteromeric, sodium-independent, anionic amino acid transport system that is highly specific for cysteine and glutamate. In this system, designated Xc(-), the anionic form of cysteine is transported in exchange for glutamate. This protein has been identified as the predominant mediator of Kaposi

A DRUG SCREENING EXPERT

sarcoma-associated herpesvirus fusion and entry permissiveness into cells. Also, increased expression of this gene in primary gliomas (compared to normal brain tissue) was associated with increased glutamate secretion via the XCT channels, resulting in neuronal cell death. [provided by RefSeq, Sep 2011].

Inhibitor · Natural Compounds · Compound Libraries · Recombinant Proteins

This product is for Research Use Only · Not for Human or Veterinary or Therapeutic Use

Tel:781-999-4286 E_mail:info@targetmol.com Address:34 Washington Street,Wellesley Hills,MA 02481