

Anti-SLC40A1 Polyclonal Antibody 2

Product Details

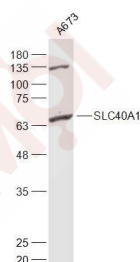
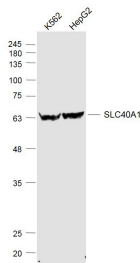
Ig Type: IgG
Reactivity: Human (predicted:Mouse,Rat,Dog,Pig,Rabbit)
Molecular Weight: Theoretical: 63 kDa. Actual: 60 kDa.
Purification: Protein A purified

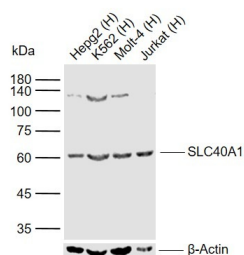
Applications

1. Sample:
K562 (Human) Cell Lysate at 30 µg
HepG2 (Human) Cell Lysate at 30 µg
Primary: Anti-SLC40A1 (TMAB-01724) at 1/1000 dilution
Secondary: IRDye800CW Goat Anti-Rabbit IgG at 1/20000 dilution
Predicted band size: 63 kDa
Observed band size: 63 kDa

2. Sample:
A673 (Human) Cell Lysate at 30 µg
Primary: Anti-SLC40A1 (TMAB-01724) at 1/1000 dilution
Secondary: IRDye800CW Goat Anti-Rabbit IgG at 1/20000 dilution
Predicted band size: 63 kDa
Observed band size: 65 kDa

3. Sample:
Lane 1: Human Hepg2 cell lysates
Lane 2: Human K562 cell lysates
Lane 3: Human Molt-4 cell lysates
Lane 4: Human Jurkat cell lysates
Primary: Anti-SLC40A1 (TMAB-01724) at 1/1000 dilution
Secondary: IRDye800CW Goat Anti-Rabbit IgG at 1/20000 dilution
Predicted band size: 63 kDa
Observed band size: 60 kDa





Application: WB

Recommended WB: 1:500-2000

Properties

Stability & Storage: Store at -20°C or -80°C for 12 months. Avoid repeated freeze-thaw cycles.

Shipping: Shipping with blue ice.

Antigen Details

Immunogen: KLH conjugated synthetic peptide: human SLC40A1/FPN1

Antigen Species: Human

Gene ID: 30061

Uniprot ID: Q9NP59

Synonyms: Solute carrier family 40 member 1;MSTP079;HFE4;FPN1;Ferroportin-1;IREG1;SLC11A3;MTP1;S40A1;Iron regulated transporter 1;MST079

Biology Area: Vitamins / minerals, Vitamins / Minerals

Research Background

SLC40A1 may be involved in iron export from duodenal epithelial cells and also in transfer of iron between maternal and fetal circulation. It mediates iron efflux in the presence of a ferroxidase (hephaestin and/or ceruloplasmin). Defects in SLC40A1 are the cause of hemochromatosis type 4, an autosomal dominant iron-loading disorder characterized by early iron accumulation in reticuloendothelial cells and a marked increase in serum ferritin.

Inhibitor · Natural Compounds · Compound Libraries · Recombinant Proteins

This product is for Research Use Only · Not for Human or Veterinary or Therapeutic Use

Tel: 781-999-4286 E_mail: info@targetmol.com Address: 34 Washington Street, Wellesley Hills, MA 02481