

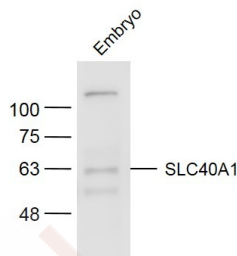
Anti-SLC40A1 Polyclonal Antibody

Product Details

Ig Type:	IgG
Reactivity:	Human (predicted:Rabbit,Cow,Pig,Dog,Rat,Mouse)
Molecular Weight:	Theoretical: 63 kDa. Actual: 63 kDa.
Purification:	Protein A purified

Applications

Verified Activity:	Sample:
	Embryo (Mouse) Lysate at 40 µg
	Primary: Anti-SLC40A1 (TMAB-01723) at 1/300 dilution
	Secondary: IRDye800CW Goat Anti-Rabbit IgG at 1/20000 dilution
	Predicted band size: 63 kDa
	Observed band size: 63 kDa



Application:	WB
Recommended	WB: 1:500-2000

Properties

Stability & Storage:	Store at -20°C or -80°C for 12 months. Avoid repeated freeze-thaw cycles.
Shipping:	Shipping with blue ice.

Antigen Details

Immunogen:	KLH conjugated synthetic peptide: human SLC40A1
Antigen Species:	Human
Gene ID:	30061
Uniprot ID:	Q9NP59
Synonyms:	FPN1;Iron regulated transporter 1;MTP1;MST079;HFE4;IREG1;S40A1;Ferroportin-1;Solute carrier family 40 member 1;SLC11A3;MSTP079
Biology Area:	Vitamins / minerals,Vitamins / Minerals

Research Background

SLC40A1 may be involved in iron export from duodenal epithelial cells and also in transfer of iron between maternal and fetal circulation. It mediates iron efflux in the presence of a ferroxidase (hephaestin and/or ceruloplasmin). Defects in SLC40A1 are the cause of hemochromatosis type 4, an autosomal dominant iron-loading disorder

characterized by early iron accumulation in reticuloendothelial cells and a marked increase in serum ferritin.

Inhibitor · Natural Compounds · Compound Libraries · Recombinant Proteins

This product is for Research Use Only · Not for Human or Veterinary or Therapeutic Use

Tel:781-999-4286 E_mail:info@targetmol.com Address:34 Washington Street,Wellesley Hills,MA 02481