

Anti-SLC2A8 Polyclonal Antibody

Product Details

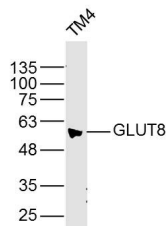
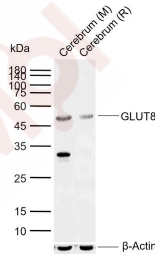
Ig Type: IgG
Reactivity: Mouse,Rat (predicted:Human)
Molecular Weight: Theoretical: 52 kDa. Actual: 52 kDa.
Purification: Protein A purified

Applications

1. Sample:
Lane 1: Mouse Cerebrum tissue lysates
Lane 2: Rat Cerebrum tissue lysates
Primary: Anti-GLUT8 (TMAB-01718) at 1/1000 dilution
Secondary: IRDye800CW Goat Anti-Rabbit IgG at 1/20000 dilution
Predicted band size: 52 kDa
Observed band size: 52 kDa

2. Sample: TM4 Cell (Mouse) Lysate at 40 µg
Primary: Anti-GLUT8 (TMAB-01718) at 1/300 dilution
Secondary: IRDye800CW Goat Anti-Rabbit IgG at 1/20000 dilution
Predicted band size: 52 kDa
Observed band size: 52 kD

Verified Activity:



Application: ELISA,WB
Recommended WB: 1:500-2000; ELISA: 1:5000-10000

Properties

Stability & Storage: Store at -20°C or -80°C for 12 months. Avoid repeated freeze-thaw cycles.

Shipping: Shipping with blue ice.

Antigen Details

Immunogen: KLH conjugated synthetic peptide: human GLUT8

Antigen Species: Human

Gene ID: 29988

Uniprot ID: Q9NY64

Synonyms: GLUTX1;GLUT-8;solute carrier family 2(facilitated glucose transporter) member 8;Glucose Transporter 8;Glucose transporter type X1;Glucose transporter type 8

Research Background

Glucose transporter 8 is an insulin-regulated facilitative glucose transporter. It binds cytochalasin B in a glucose-inhibitable manner. It appears to be a dual-specific sugar transporter as it can be inhibited by fructose. It is highly expressed in testis, where it is down-regulated by estrogen, but not in testicular carcinoma. Lower amounts are present in most other tissues.

[Inhibitor](#) · [Natural Compounds](#) · [Compound Libraries](#) · [Recombinant Proteins](#)

This product is for Research Use Only. Not for Human or Veterinary or Therapeutic Use

Tel:781-999-4286 E_mail:info@targetmol.com Address:34 Washington Street,Wellesley Hills,MA 02481