

## Anti-SLC2A6 Polyclonal Antibody

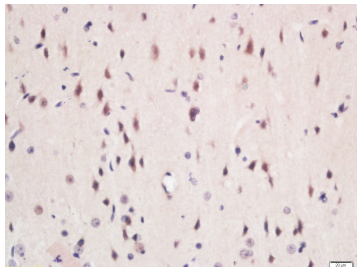
### Product Details

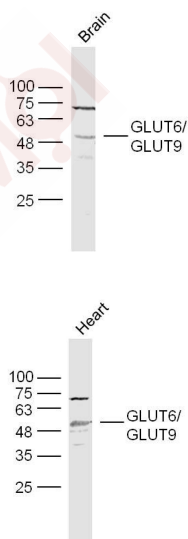
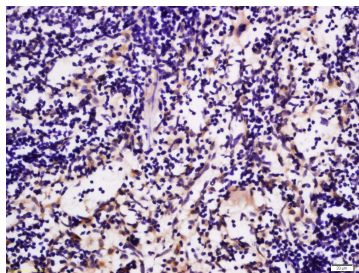
Ig Type:	IgG
Reactivity:	Mouse,Rat (predicted:Human)
Molecular Weight:	Theoretical: 55 kDa. Actual: 55 kDa.
Purification:	Protein A purified

### Applications

1. Tissue/cell: rat brain tissue; 4% Paraformaldehyde-fixed and paraffin-embedded; Antigen retrieval: citrate buffer (0.01M, pH6.0), Boiling bathing for 15 min; Block endogenous peroxidase by 3% Hydrogen peroxide for 30 min; Blocking buffer (normal goat serum) at 37°C for 20 min; Incubation: Anti-GLUT6 Polyclonal Antibody, Unconjugated (TMAB-01717) 1:200, overnight at 4°C, followed by conjugation to the secondary antibody and DAb staining.
2. Tissue/cell: rat spleen tissue; 4% Paraformaldehyde-fixed and paraffin-embedded; Antigen retrieval: citrate buffer (0.01M, pH6.0), Boiling bathing for 15 min; Block endogenous peroxidase by 3% Hydrogen peroxide for 30 min; Blocking buffer (normal goat serum) at 37°C for 20 min; Incubation: Anti-GLUT6 Polyclonal Antibody, Unconjugated (TMAB-01717) 1:200, overnight at 4°C, followed by conjugation to the secondary antibody and DAb staining.
3. Sample:  
Brain (Mouse) Lysate at 40 µg  
Primary: Anti-GLUT6/GLUT9 (TMAB-01717) at 1/300 dilution  
Secondary: IRDye800CW Goat Anti-Rabbit IgG at 1/20000 dilution  
Predicted band size: 55 kDa  
Observed band size: 55 kDa
4. Sample:  
Heart (Mouse) Lysate at 40 µg  
Primary: Anti-GLUT6/GLUT9 (TMAB-01717) at 1/300 dilution  
Secondary: IRDye800CW Goat Anti-Rabbit IgG at 1/20000 dilution  
Predicted band size: 55 kDa  
Observed band size: 55 kDa

Verified Activity:





Application: IF,IHC-Fr,IHC-P,WB

Recommended WB: 1:500-2000; IHC-P: 1:100-500; IHC-Fr: 1:100-500; IF: 1:100-500

### Properties

Stability & Storage: Store at -20°C or -80°C for 12 months. Avoid repeated freeze-thaw cycles.

Shipping: Shipping with blue ice.

### Antigen Details

Immunogen: KLH conjugated synthetic peptide: human GLUT6

Antigen Species: Human

Gene ID: 11182

Uniprot ID: Q9UGQ3

Synonyms: A330096C23; GLUT-6; HSA011372; GTR6; Glut6; RP23-449M10.2; SLC2A6; Solute carrier family 2, facilitated glucose transporter member 6; Glucose transporter type 6; F630103L12Rik; Glucose Transporter GLUT6

Biology Area: Cancer, Channels

### Research Background

The oxidation of glucose functions as the dominant source of metabolic energy for mammals. The plasma membrane is impermeable to glucose, so the cellular uptake of this important nutrient is achieved by facultative hexose transporters (Gluts). Gluts are integral membrane proteins that transport glucose and related hexoses. Glucose binds to a Glut on one side of the membrane which provokes a conformational change causing it to release glucose to the other side. Members of the Glut family may enhance the metabolic activity of tumor cells. Glut6 is part of the third out of three classes of Gluts. Glut6 is mainly expressed in the brain, spleen and peripheral leukocytes. It appears to be regulated by subcellular redistribution, because it is targeted to intracellular compartments by di-

leucine motifs, recycling itself in a Dynamin-dependent manner.

**Inhibitor · Natural Compounds · Compound Libraries · Recombinant Proteins**

This product is for Research Use Only · Not for Human or Veterinary or Therapeutic Use

Tel:781-999-4286 E\_mail:info@targetmol.com Address:34 Washington Street,Wellesley Hills,MA 02481