

Anti-SLC2A4 Polyclonal Antibody

Product Details

Ig Type:	IgG
Reactivity:	Human,Mouse,Rat (predicted:Dog,Pig,Cow,Rabbit,Sheep)
Molecular Weight:	Theoretical: 54 kDa. Actual: 50 kDa.
Purification:	Protein A purified

Applications

1. Sample:

Heart (Rat) Cell Lysate at 40 µg

Primary: Anti-GLUT4 (TMAB-01715) at 1/300 dilution

Secondary: IRDye800CW Goat Anti-Rabbit IgG at 1/20000 dilution

Predicted band size: 54 kDa

Observed band size: 54 kDa

2. Tissue/cell: rat kidney tissue; 4% Paraformaldehyde-fixed and paraffin-embedded;

Antigen retrieval: citrate buffer (0.01M, pH6.0), Boiling bathing for 15 min; Block endogenous peroxidase by 3% Hydrogen peroxide for 30 min; Blocking buffer (normal goat serum) at 37°C for 20 min;

Incubation: Anti-GLUT4 Polyclonal Antibody, Unconjugated (TMAB-01715) 1:200, overnight at 4°C, followed by conjugation to the secondary antibody and DAb staining.

3. Blank control (blue line): K562 (blue).

Primary Antibody (green line): Rabbit Anti-GLUT4 antibody (TMAB-01715)

Dilution: 1 µg/10⁶ cells;

Isotype Control Antibody (orange line): Rabbit IgG.

Secondary Antibody (white blue line): Goat anti-rabbit IgG-PE

Dilution: 1 µg/test.

Protocol

Verified Activity:

The cells were fixed with 70% ethanol (overnight at 4°C) and then permeabilized with 0.1% PBS-Tween for 20 min at room temperature. Cells stained with Primary Antibody for 30 min at room temperature. The cells were then incubated in 1 X PBS/2% BSA/10% goat serum to block non-specific protein-protein interactions followed by the antibody for 15 min at room temperature. The secondary antibody used for 40 min at room temperature.

4. Sample: Heart (Mouse) Lysate at 40 µg

Primary: Anti-GLUT4 (TMAB-01715) at 1/300 dilution

Secondary: IRDye800CW Goat Anti-Rabbit IgG at 1/10000 dilution

Predicted band size: 54 kDa

Observed band size: 54 kDa

5. Sample:

Lane 1: NIH/3T3 (Mouse) Cell Lysate at 30 µg

Lane 2: Heart (Mouse) Lysate at 40 µg

Lane 3: Heart (Rat) Lysate at 40 µg

Lane 4: Muscle (Mouse) Lysate at 40 µg

Lane 5: Muscle (Rat) Lysate at 40 µg

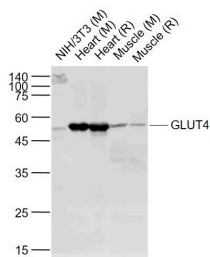
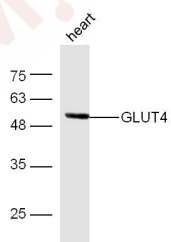
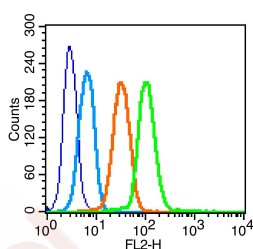
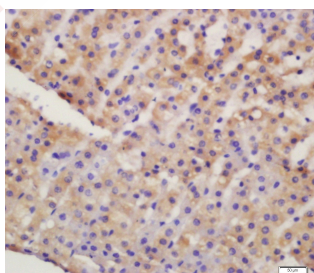
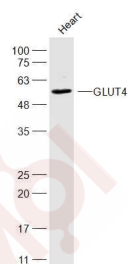
Primary: Anti-GLUT4 (TMAB-01715) at 1/1000 dilution

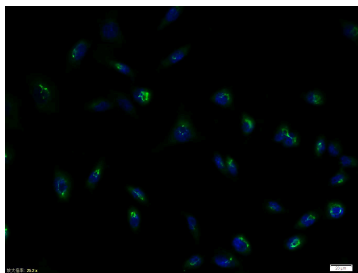
Secondary: IRDye800CW Goat Anti-Rabbit IgG at 1/20000 dilution

Predicted band size: 51 kDa

Observed band size: 51 kDa

6. Tissue/cell: NIH/3T3 cell; 4% Paraformaldehyde-fixed; Triton X-100 at room temperature for 20 min; Blocking buffer (normal goat serum) at 37°C for 20 min; Antibody incubation with (GLUT4) polyclonal Antibody, Unconjugated (TMAB-01715) 1:100, 90 minutes at 37°C; followed by a FITC conjugated Goat Anti-Rabbit IgG antibody at 37°C for 90 minutes, DAPI (blue) was used to stain the cell nucleus.





Application: FCM,ICC/IF,IF,IHC-Fr,IHC-P,WB

Recommended FCM=1 µg/Test; ICC/IF=1:100-500; IF=1:100-500; IHC-Fr=1:100-500; IHC-P=1:100-500; WB=1:500-2000

Properties

Stability & Storage: Store at -20°C or -80°C for 12 months. Avoid repeated freeze-thaw cycles.

Shipping: Shipping with blue ice.

Antigen Details

Immunogen: KLH conjugated synthetic peptide: human GLUT4

Antigen Species: Human

Gene ID: 6517

Uniprot ID: P14672

Synonyms: Glucose transporter type 4;Solute carrier family 2, facilitated glucose transporter member 4; insulin-responsive;kug;GTR4;Glucose Transporter GLUT4;solute carrier family 2(facilitated glucose transporter) member 4;SLC 2A4;GLUT-4;Glucose transporter type 4 insulin responsive; Glucose transporter GLUT 4

Biology Area: Metabolism of carbohydrates,Cardiac metabolism,Carbohydrate metabolism,Energy Metabolism,Diabetes,Energy Metabolism,Adipogenesis

Research Background

GLUT4 is the facilitated glucose transporter expressed exclusively in adipocytes and muscle cells, and is also known as the "insulin-responsive" glucose transporter. GLUT4 translocates from an ill-defined intracellular compartment to the plasma membrane in response to insulin. The total cellular content of GLUT4 is significantly decreased in adipose cells from many patients with Type II diabetes mellitus, and animals with some types of experimental diabetes.

Inhibitor · Natural Compounds · Compound Libraries · Recombinant Proteins

This product is for Research Use Only · Not for Human or Veterinary or Therapeutic Use

Tel:781-999-4286 E_mail:info@targetmol.com Address:34 Washington Street,Wellesley Hills,MA 02481