

## Anti-SLC2A3 Polyclonal Antibody

### Product Details

Ig Type:	IgG
Reactivity:	Human, Mouse, Rat (predicted: Chicken, Dog, Pig, Cow, Horse, Rabbit, Sheep, Guinea Pig)
Molecular Weight:	Theoretical: 54 kDa. Actual: 63,50 kDa.
Purification:	Protein A purified

### Applications

1. Tissue/cell: rat brain tissue; 4% Paraformaldehyde-fixed and paraffin-embedded; Antigen retrieval: citrate buffer (0.01M, pH6.0), Boiling bathing for 15 min; Blocking buffer (normal goat serum) at 37°C for 20 min; Incubation: Anti-Glut3 Polyclonal Antibody, Unconjugated (TMAB-01714) 1:200, overnight at 4°C; The secondary antibody was Goat Anti-Rabbit IgG, Cy3 conjugated used at 1:200 dilution for 40 minutes at 37°C.

2. Tissue/cell: rat brain tissue; 4% Paraformaldehyde-fixed and paraffin-embedded; Antigen retrieval: citrate buffer (0.01M, pH6.0), Boiling bathing for 15 min; Blocking buffer (normal goat serum) at 37°C for 20 min; Incubation: Anti-Glut3 Polyclonal Antibody, FITC conjugated (TMAB-01714-FITC) 1:100, 60 minutes at 37°C;

Excitation wavelength: 488nm; Emission wavelength: 519nm

3. Tissue/cell: rat brain tissue; 4% Paraformaldehyde-fixed and paraffin-embedded; Antigen retrieval: citrate buffer (0.01M, pH6.0), Boiling bathing for 15 min; Block endogenous peroxidase by 3% Hydrogen peroxide for 30 min; Blocking buffer (normal goat serum) at 37°C for 20 min;

Verified Activity: Incubation: Anti-Glut3 Polyclonal Antibody, Unconjugated (TMAB-01714) 1:200, overnight at 4°C, followed by conjugation to the secondary antibody and DAB staining.

4. Sample:

293t (Human) Cell Lysate at 30 µg

Hela (Human) Cell Lysate at 30 µg

Primary: Anti-TMAB-01714 (TMAB-01714) at 1/1000 dilution

Secondary: IRDye800CW Goat Anti-Rabbit IgG at 1/20000 dilution

Predicted band size: 54 kDa

Observed band size: 63 kDa

5. Sample:

Brain (Mouse) Lysate at 40 µg

Brain (Rat) Lysate at 40 µg

293T (Human) Cell Lysate at 30 µg

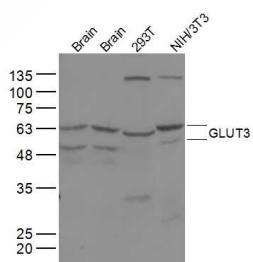
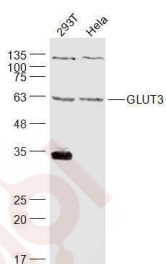
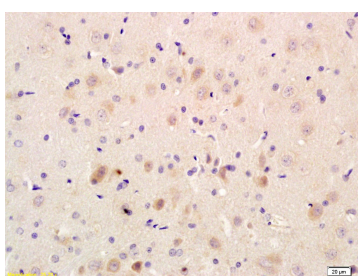
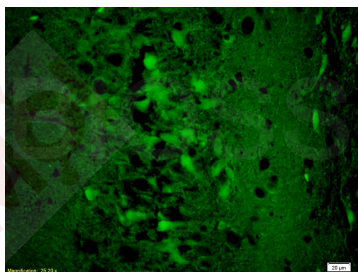
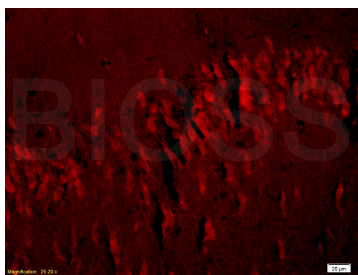
NIH/3T3 (Mouse) Cell Lysate at 30 µg

Primary: Anti-GLUT3 (TMAB-01714) at 1/300 dilution

Secondary: IRDye800CW Goat Anti-Rabbit IgG at 1/20000 dilution

Predicted band size: 54 kDa

Observed band size: 50/63 kDa



Application: IF,IHC-Fr,IHC-P,WB

Recommended WB: 1:500-2000; IHC-P: 1:100-500; IHC-Fr: 1:100-500; IF: 1:100-500

### Properties

Stability & Storage: Store at -20°C or -80°C for 12 months. Avoid repeated freeze-thaw cycles.

Shipping: Shipping with blue ice.

### Antigen Details

Immunogen:	KLH conjugated synthetic peptide: human GLUT3
Antigen Species:	Human
Gene ID:	6515
Uniprot ID:	P11169
Synonyms:	Solute carrier family 2;Glucose transporter type 3 brain;Solute Carrier Family 2(Facilitated Glucose Transporter) Member 3;facilitated glucose transporter member 3;Glucose Transporter Type 3;GTR3;FLJ90380;GLUT 3;Glucose Transporter GLUT3
Biology Area:	Metabolism of carbohydrates,Other Antibodies,Carbohydrate metabolism,Cancer,Channels

---

### Research Background

May act as a glucose transporter in neurons; may mediate increased glucose uptake in response to neuronal injury. Glucose is fundamental to the metabolism of mammalian cells. Several glucose transporter protein (Glut) isoforms have been identified and shown to function in response to insulin and IGF1 induced signaling. GLUT3 is detectable in a few normal cell type spermatids in testis with active spermatogenesis, placental trophoblast membranes, and neurons in brain. GLUT3 staining is also detectable in human cancers including those of the ovary, lung, and testis. Alternative names: FLJ90380; Glucose Transporter Type 3; Glucose transporter type 3 brain; GLUT 3; GLUT3; SLC2A3; Solute Carrier Family 2 (Facilitated Glucose Transporter) Member 3.

**Inhibitor · Natural Compounds · Compound Libraries · Recombinant Proteins**

This product is for Research Use Only · Not for Human or Veterinary or Therapeutic Use

Tel:781-999-4286 E\_mail:info@targetmol.com Address:34 Washington Street,Wellesley Hills,MA 02481