

Anti-SLC2A2 Polyclonal Antibody 2

Product Details

Ig Type:	IgG
Reactivity:	Human,Mouse,Rat (predicted:Horse)
Molecular Weight:	Theoretical: 54 kDa. Actual: 54 kDa.
Purification:	Protein A purified

Applications

1. Sample:

Lane 1: Liver (Mouse) Lysate at 40 µg
Lane 2: Kidney (Mouse) Lysate at 40 µg
Lane 3: Pancreas (Mouse) Lysate at 40 µg

Primary: Anti-GLUT2 (TMAB-01713) at 1/1000 dilution

Secondary: IRDye800CW Goat Anti-Rabbit IgG at 1/20000 dilution

Predicted band size: 57/45 kDa

Observed band size: 47 kDa

2. Tissue/cell: rat kidney tissue; 4% Paraformaldehyde-fixed and paraffin-embedded;

Antigen retrieval: citrate buffer (0.01M, pH6.0), Boiling bathing for 15 min; Block endogenous peroxidase by 3% Hydrogen peroxide for 30 min; Blocking buffer (normal goat serum) at 37°C for 20 min;

Incubation: Anti-GLUT2 Polyclonal Antibody, Unconjugated (TMAB-01713) 1:200, overnight at 4°C, followed by conjugation to the secondary antibody and DAb staining.

3. Blank control (blue line): Hep G2 (fixed with 70% ethanol Overnight at 4°C).

Verified Activity: Primary Antibody (green line): Rabbit Anti-GLUT2 antibody (TMAB-01713), Dilution: 1 µg/10⁶ cells;

Isotype Control Antibody (orange line): Rabbit IgG.

Secondary Antibody (white blue line): Goat anti-rabbit IgG-PE, Dilution: 1 µg/test.

4. Sample:

Kidney (Mouse) Lysate at 40 µg

Primary: Anti-GLUT2 (TMAB-01713) at 1/300 dilution

Secondary: IRDye800CW Goat Anti-Rabbit IgG at 1/20000 dilution

Predicted band size: 54 kDa

Observed band size: 54 kDa

5. Sample:

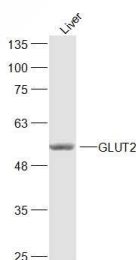
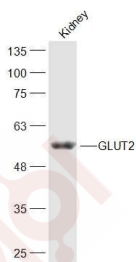
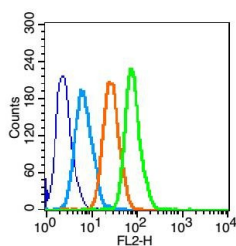
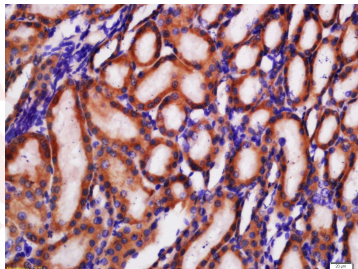
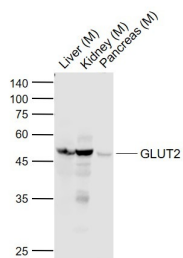
Liver (Mouse) Lysate at 40 µg

Primary: Anti-GLUT2 (TMAB-01713) at 1/300 dilution

Secondary: IRDye800CW Goat Anti-Rabbit IgG at 1/20000 dilution

Predicted band size: 54 kDa

Observed band size: 54 kDa



Application: FCM,IF,IHC-Fr,IHC-P,WB

Recommended WB: 1:500-2000; IHC-P: 1:100-500; IHC-Fr: 1:100-500; IF: 1:100-500; FCM: 1µg/Test

Properties

Stability & Storage: Store at -20°C or -80°C for 12 months. Avoid repeated freeze-thaw cycles.

Shipping: Shipping with blue ice.

Antigen Details

Immunogen:	KLH conjugated synthetic peptide: human GLUT2
Antigen Species:	Human
Gene ID:	6514
Uniprot ID:	P11168
Synonyms:	GTR2;Glucose transporter type 2, liver;GLUT 2;Solute carrier family 2, facilitated glucose transporter member 2;solute carrier family 2 member 2;GLUT-2;SLC2A2
Biology Area:	Metabolism of carbohydrates, Metabolism of lipids and lipoproteins, Endoderm, Carbohydrate metabolism, Energy Metabolism, Lipid metabolism, Energy Metabolism, Endoderm

Research Background

This gene encodes an integral plasma membrane glycoprotein of the liver, islet beta cells, intestine, and kidney epithelium. The encoded protein mediates facilitated bidirectional glucose transport. Because of its low affinity for glucose, it has been suggested as a glucose sensor. Mutations in this gene are associated with susceptibility to diseases, including Fanconi-Bickel syndrome and noninsulin-dependent diabetes mellitus (NIDDM). Alternative splicing results in multiple transcript variants of this gene. [provided by RefSeq, Jul 2013]

Inhibitor · Natural Compounds · Compound Libraries · Recombinant Proteins

This product is for Research Use Only · Not for Human or Veterinary or Therapeutic Use

Tel: 781-999-4286 E_mail: info@targetmol.com Address: 34 Washington Street, Wellesley Hills, MA 02481