

Anti-SLC2A2 Polyclonal Antibody

Product Details

Ig Type:	IgG
Reactivity:	Human,Mouse,Rat (predicted:Chicken,Dog,Pig,Cow,Sheep,Goat)
Molecular Weight:	Theoretical: 57 kDa. Actual: 50 kDa.
Purification:	Protein A purified

Applications

1. Paraformaldehyde-fixed, paraffin embedded (rat pancreas tissue); Antigen retrieval by boiling in sodium citrate buffer (pH6.0) for 15 min; Block endogenous peroxidase by 3% hydrogen peroxide for 20 min; Blocking buffer (normal goat serum) at 37°C for 30 min; Antibody incubation with (Glut2) Polyclonal Antibody, Unconjugated (TMAB-01712) at 1:400 overnight at 4°C, followed by a conjugated secondary for 20 min and DAB staining.

2. Blank control (blue line): Hep G2 (blue).

Primary Antibody (green line): Rabbit Anti-GLUT2 antibody (TMAB-01712)

Dilution: 1 µg/10⁶ cells;

Isotype Control Antibody (orange line): Rabbit IgG.

Secondary Antibody (white blue line): Goat anti-rabbit IgG-PE

Dilution: 1 µg/test.

Verified Activity: Protocol

The cells were fixed with 70% ethanol Overnight at 4°C. Cells stained with Primary Antibody for 30 min at room temperature. The cells were then incubated in 1 X PBS/2% BSA/10% goat serum to block non-specific protein-protein interactions followed by the antibody for 15 min at room temperature. The secondary antibody used for 40 min at room temperature.

3. Sample:

Lane 1: Kidney (Mouse) Lysate at 40 µg

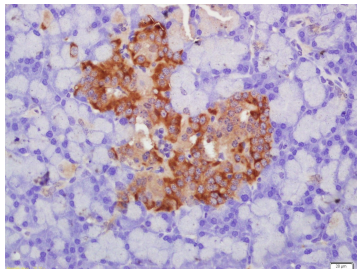
Lane 2: Pancreas (Mouse) Lysate at 40 µg

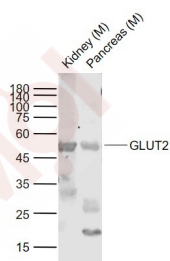
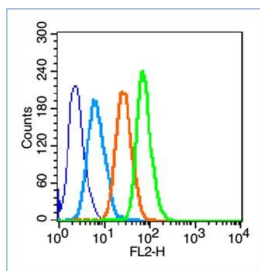
Primary: Anti-GLUT2 (TMAB-01712) at 1/1000 dilution

Secondary: IRDye800CW Goat Anti-Rabbit IgG at 1/20000 dilution

Predicted band size: 50-53 kDa

Observed band size: 50 kDa





Application: FCM,IF,IHC-Fr,IHC-P,WB

Recommended WB: 1:500-2000; IHC-P: 1:100-500; IHC-Fr: 1:100-500; IF: 1:100-500; FCM: 1µg /test

Properties

Stability & Storage: Store at -20°C or -80°C for 12 months. Avoid repeated freeze-thaw cycles.

Shipping: Shipping with blue ice.

Antigen Details

Immunogen: KLH conjugated synthetic peptide: human GLUT2

Antigen Species: Human

Gene ID: 6514

Uniprot ID: P11168

Synonyms: solute carrier family 2 member 2;GLUT-2;Solute carrier family 2, facilitated glucose transporter member 2;SLC2A2;GTR2;Glucose transporter type 2, liver;GLUT 2

Biology Area: Metabolism of carbohydrates, Metabolism of lipids and lipoproteins, Endoderm, Carbohydrate metabolism, Energy Metabolism, Lipid metabolism, Energy Metabolism, Endoderm

Research Background

This gene encodes an integral plasma membrane glycoprotein of the liver, islet beta cells, intestine, and kidney epithelium. The encoded protein mediates facilitated bidirectional glucose transport. Because of its low affinity for glucose, it has been suggested as a glucose sensor. Mutations in this gene are associated with susceptibility to diseases, including Fanconi-Bickel syndrome and noninsulin-dependent diabetes mellitus (NIDDM). Alternative splicing results in multiple transcript variants of this gene. [provided by RefSeq, Jul 2013]

Inhibitor · Natural Compounds · Compound Libraries · Recombinant Proteins

This product is for Research Use Only · Not for Human or Veterinary or Therapeutic Use

Tel: 781-999-4286 E_mail: info@targetmol.com Address: 34 Washington Street, Wellesley Hills, MA 02481