

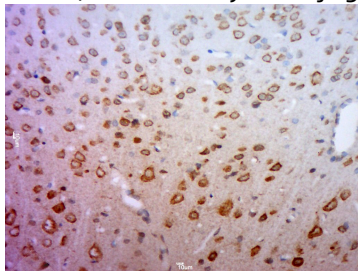
## Anti-SLC2A1 Polyclonal Antibody 2

## Product Details

Ig Type:	IgG
Reactivity:	Rat (predicted:Human,Mouse,Dog,Pig,Cow,Sheep)
Molecular Weight:	Theoretical: 54 kDa.
Purification:	Protein A purified

## Applications

Verified Activity: Paraformaldehyde-fixed, paraffin embedded (Rat brain); Antigen retrieval by boiling in sodium citrate buffer (pH6.0) for 15 min; Block endogenous peroxidase by 3% hydrogen peroxide for 20 min; Blocking buffer (normal goat serum) at 37°C for 30 min; Antibody incubation with (Glucose transporter type 1; GLUT1) Polyclonal Antibody, Unconjugated (TMAB-01710) at 1:400 overnight at 4°C, followed by a conjugated secondary for 20 min and DAB staining.



Application:	IF,IHC-Fr,IHC-P
Recommended	IHC-P: 1:100-500; IHC-Fr: 1:100-500; IF: 1:100-500

## Properties

Stability & Storage:	Store at -20°C or -80°C for 12 months. Avoid repeated freeze-thaw cycles.
Shipping:	Shipping with blue ice.

## Antigen Details

Immunogen:	KLH conjugated synthetic peptide: human GLUT1
Antigen Species:	Human
Gene ID:	6513
Uniprot ID:	P11166
Synonyms:	SLC2A1;Glucose transporter type 1, erythrocyte/brain (GLUT-1);Solute carrier family 2, facilitated glucose transporter member 1;facilitated glucose transporter member 1;HepG2 glucose transporter;GLUT1
Biology Area:	Metabolism of carbohydrates,Diabetes associated,Carbohydrate metabolism,Cancer,Diabetes, Heart disease,glucose transporter glut1,Channels

## Research Background

This gene encodes a major glucose transporter in the mammalian blood-brain barrier. Mutations in this gene have been found in a family with paroxysmal exertion-induced dyskinesia. [provided by RefSeq, Jul 2008].

**Inhibitor · Natural Compounds · Compound Libraries · Recombinant Proteins**

This product is for Research Use Only · Not for Human or Veterinary or Therapeutic Use

Tel:781-999-4286 E\_mail:info@targetmol.com Address:34 Washington Street,Wellesley Hills,MA 02481