

Anti-SLC2A1 Polyclonal Antibody

Product Details

Ig Type: IgG
Reactivity: Human, Mouse, Rat (predicted: Chicken, Dog, Pig, Cow, Sheep)
Molecular Weight: Theoretical: 54 kDa. Actual: 52 kDa.
Purification: Protein A purified

Applications

1. Tissue/cell: human kidney tissue; 4% Paraformaldehyde-fixed and paraffin-embedded; Antigen retrieval: citrate buffer (0.01M, pH6.0), Boiling bathing for 15 min; Block endogenous peroxidase by 3% Hydrogen peroxide for 30 min; Blocking buffer (normal goat serum) at 37°C for 20 min; Incubation: Anti-GLUT1 Polyclonal Antibody, Unconjugated (TMAB-01709) 1:400, overnight at 4°C, followed by conjugation to the secondary antibody and DAb staining.

2. Image was kindly submitted by Dr. Lelisa Gemta from University of Virginia. Mouse splenocytes stained with Rabbit Anti-GLUT1 Polyclonal Antibody, PE conjugated (TMAB-01709-PE) at 1:50.

Verified Activity:

3. Sample:

Lane 1: Heart (Mouse) Lysate at 40 µg

Lane 2: Cerebrum (Mouse) Lysate at 40 µg

Lane 3: Muscle (Mouse) Lysate at 40 µg

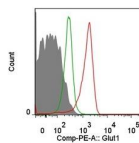
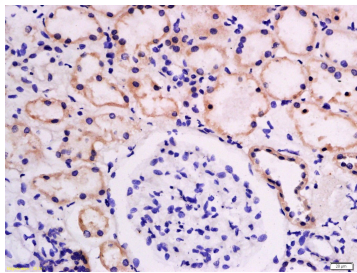
Lane 4: Cerebrum (Rat) Lysate at 40 µg

Primary: Anti-GLUT1 (TMAB-01709) at 1/1000 dilution

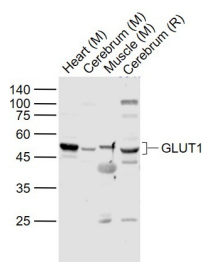
Secondary: IRDye800CW Goat Anti-Rabbit IgG at 1/20000 dilution

Predicted band size: 54 kDa

Observed band size: 52 kDa



Day 2 effector CD8+ T cells
Naive CD8+ T cells
Naive CD8+ T cells



Application: FCM,IF,IHC-Fr,IHC-P,WB

Recommended WB: 1:500-2000; IHC-P: 1:100-500; IHC-Fr: 1:100-500; IF: 1:100-500; FCM: 1µg/Test

Properties

Stability & Storage: Store at -20°C or -80°C for 12 months. Avoid repeated freeze-thaw cycles.

Shipping: Shipping with blue ice.

Antigen Details

Immunogen: KLH conjugated synthetic peptide: human GLUT1

Antigen Species: Human

Gene ID: 6513

Uniprot ID: P11166

Synonyms: HepG2 glucose transporter;facilitated glucose transporter member 1;GLUT1;Glucose transporter type 1, erythrocyte/brain (GLUT-1);SLC2A1;Solute carrier family 2, facilitated glucose transporter member 1

Biology Area: Metabolism of carbohydrates,Diabetes associated,Carbohydrate metabolism,Cancer,Diabetes, Heart disease,glucose transporter glut1,Channels

Research Background

This gene encodes a major glucose transporter in the mammalian blood-brain barrier. Mutations in this gene have been found in a family with paroxysmal exertion-induced dyskinesia. [provided by RefSeq, Jul 2008].

Inhibitor · Natural Compounds · Compound Libraries · Recombinant Proteins

This product is for Research Use Only · Not for Human or Veterinary or Therapeutic Use

Tel:781-999-4286 E_mail:info@targetmol.com Address:34 Washington Street,Wellesley Hills,MA 02481