

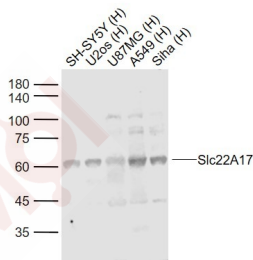
Anti-SLC22A17 Polyclonal Antibody

Product Details

Ig Type: IgG
 Reactivity: Human,Rat (predicted:Mouse,Dog,Pig,Cow)
 Molecular Weight: Theoretical: 58 kDa. Actual: 61 kDa.
 Purification: Protein A purified

Applications

Sample:
 Lane 1: SH-SY5Y (Human) Cell Lysate at 30 µg
 Lane 2: U2os (Human) Cell Lysate at 30 µg
 Lane 3: U87MG (Human) Cell Lysate at 30 µg
 Lane 4: A549 (Human) Cell Lysate at 30 µg
 Lane 5: Siha (Human) Cell Lysate at 30 µg
 Verified Activity:
 Primary: Anti-Slc22A17 (TMAB-01706) at 1/1000 dilution
 Secondary: IRDye800CW Goat Anti-Rabbit IgG at 1/20000 dilution
 Predicted band size: 58 kDa
 Observed band size: 61 kDa



Application: IF,IHC-Fr,WB
 Recommended WB: 1:500-2000; IHC-Fr: 1:100-500; IF: 1:100-500

Properties

Stability & Storage: Store at -20°C or -80°C for 12 months. Avoid repeated freeze-thaw cycles.
 Shipping: Shipping with blue ice.

Antigen Details

Immunogen: KLH conjugated synthetic peptide: human NGALR
 Antigen Species: Human
 Gene ID: 51310
 Uniprot ID: Q8WUG5
 Synonyms: Slc22a17;Lipocalin-2 receptor;24p3 receptor (24p3R);Brain-type organic cation transporter; Boct;Solute carrier family 22 member 17
 Biology Area: Channels

Research Background

SLC22A17 (solute carrier family 22 member 17; organic cation transporter,) may act as a brain-specific organic ion transporter. The Major Facilitator Superfamily (MFS) is a large and diverse group of secondary transporters that includes uniporters, symporters, and antiporters. MFS proteins facilitate the transport across cytoplasmic or internal membranes of a variety of substrates including ions, sugar phosphates, drugs, neurotransmitters, nucleosides, amino acids, and peptides. They do so using the electrochemical potential of the transported substrates. Uniporters transport a single substrate, while symporters and antiporters transport two substrates in the same or in opposite directions, respectively, across membranes. MFS proteins are typically 400 to 600 amino acids in length, and the majority contain 12 transmembrane alpha helices (TMs) connected by hydrophilic loops.

Inhibitor · Natural Compounds · Compound Libraries · Recombinant Proteins

This product is for Research Use Only · Not for Human or Veterinary or Therapeutic Use

Tel: 781-999-4286 E_mail: info@targetmol.com Address: 34 Washington Street, Wellesley Hills, MA 02481