

Anti-SLC1A3 Polyclonal Antibody

Product Details

Ig Type:	IgG
Reactivity:	Human,Mouse,Rat
Molecular Weight:	Theoretical: 60 kDa. Actual: 60 kDa.
Purification:	Protein A purified

Applications

1. Paraformaldehyde-fixed, paraffin embedded (mouse brain); Antigen retrieval by boiling in sodium citrate buffer (pH6.0) for 15 min; Block endogenous peroxidase by 3% hydrogen peroxide for 20 min; Blocking buffer (normal goat serum) at 37°C for 30 min; Antibody incubation with (EAAT1) Polyclonal Antibody, Unconjugated (TMAB-01705) at 1:200 overnight at 4°C, followed by operating according to SP Kit (Rabbit) instructions and DAB staining.
2. Paraformaldehyde-fixed, paraffin embedded (rat brain); Antigen retrieval by boiling in sodium citrate buffer (pH6.0) for 15 min; Block endogenous peroxidase by 3% hydrogen peroxide for 20 min; Blocking buffer (normal goat serum) at 37°C for 30 min; Antibody incubation with (EAAT1) Polyclonal Antibody, Unconjugated (TMAB-01705) at 1:200 overnight at 4°C, followed by operating according to SP Kit (Rabbit) instructions and DAB staining.

3. Sample:

Lane 1: U87MG (Human) Cell Lysate at 30 µg

Lane 2: U251 (Human) Cell Lysate at 30 µg

Primary: Anti-EAAT1 (TMAB-01705) at 1/1000 dilution

Secondary: IRDye800CW Goat Anti-Rabbit IgG at 1/20000 dilution

Predicted band size: 60 kDa

Observed band size: 60 kDa

4. Blank control: U87MG.

Primary Antibody (green line): Rabbit Anti-EAAT1 antibody (TMAB-01705)

Dilution: 1 µg/10⁶ cells;

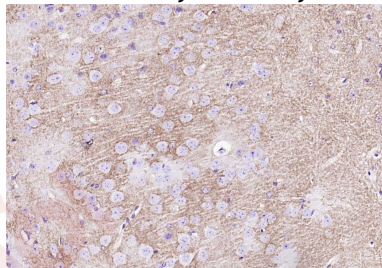
Isotype Control Antibody (orange line): Rabbit IgG.

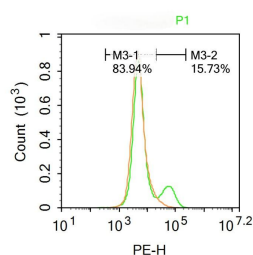
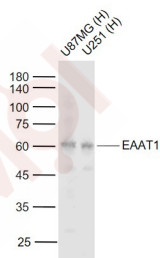
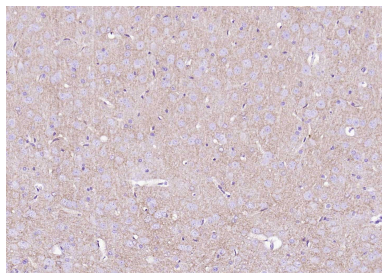
Secondary Antibody: Goat anti-rabbit IgG-PE

Dilution: 1 µg/test.

The cells were incubated in 5% BSA to block non-specific protein-protein interactions for 30 min at room temperature. Cells stained with Primary Antibody for 30 min at room temperature.

The secondary antibody used for 40 min at room temperature.





Application: FCM,IF,IHC-Fr,IHC-P,WB

Recommended WB: 1:500-2000; IHC-P: 1:100-500; IHC-Fr: 1:100-500; IF: 1:100-500; FCM: 1µg/Test

Properties

Stability & Storage: Store at -20°C or -80°C for 12 months. Avoid repeated freeze-thaw cycles.

Shipping: Shipping with blue ice.

Antigen Details

Immunogen: KLH conjugated synthetic peptide: human EAAT1

Antigen Species: Human

Gene ID: 6507

Uniprot ID: P43003

Synonyms: Sodium-dependent glutamate/aspartate transporter 1 (GLAST-1);Solute carrier family 1 member 3;Excitatory amino acid transporter 1;EAAT1;GLAST1;SLC1A3;GLAST

Biology Area: Aspartate,Glutamate,Glutamate

Research Background

This gene encodes a member of a high affinity glutamate transporter family. This gene functions in the termination of excitatory neurotransmission in central nervous system. Mutations are associated with episodic ataxia, Type 6. Alternative splicing results in multiple transcript variants.[provided by RefSeq, Feb 2014]

Inhibitor · Natural Compounds · Compound Libraries · Recombinant Proteins

This product is for Research Use Only· Not for Human or Veterinary or Therapeutic Use

Tel:781-999-4286 E_mail:info@targetmol.com Address:34 Washington Street,Wellesley Hills,MA 02481