

## Anti-SLC16A3 Polyclonal Antibody

## Product Details

Ig Type:	IgG
Reactivity:	Mouse,Rat (predicted:Human,Cow,Horse)
Molecular Weight:	Theoretical: 52 kDa. Actual: 50 kDa.
Purification:	Protein A purified

## Applications

## Sample:

Lane 1: Mouse Muscle tissue lysates

Lane 2: Rat Muscle tissue lysates

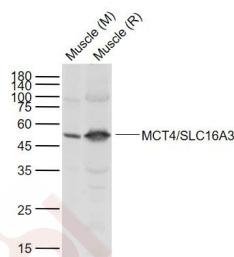
## Verified Activity:

Primary: Anti-MCT4/SLC16A3 (TMAB-01703) at 1/1000 dilution

Secondary: IRDye800CW Goat Anti-Rabbit IgG at 1/20000 dilution

Predicted band size: 52 kDa

Observed band size: 50 kDa



Application:	WB
Recommended	WB: 1:500-2000

## Properties

Stability & Storage:	Store at -20°C or -80°C for 12 months. Avoid repeated freeze-thaw cycles.
Shipping:	Shipping with blue ice.

## Antigen Details

Immunogen:	KLH conjugated synthetic peptide: human SLC16A3
Antigen Species:	Human
Gene ID:	9123
Uniprot ID:	O15427
Synonyms:	solute carrier family 16 member 3;Slc16a3;MCT-4;Mct4;Monocarboxylate transporter 3;MOT4; Monocarboxylate transporter 4;Mct3

## Research Background

Lactic acid and pyruvate transport across plasma membranes is catalyzed by members of the proton-linked monocarboxylate transporter (MCT) family, which has been designated solute carrier family-16. Each MCT appears to have slightly different substrate and inhibitor specificities and transport kinetics, which are related to the

## A DRUG SCREENING EXPERT

---

metabolic requirements of the tissues in which it is found. The MCTs, which include MCT1 (SLC16A1; MIM 600682) and MCT2 (SLC16A7; MIM 603654), are characterized by 12 predicted transmembrane domains (Price et al., 1998 [PubMed 9425115]).[supplied by OMIM, Mar 2008]

**Inhibitor · Natural Compounds · Compound Libraries · Recombinant Proteins**

This product is for Research Use Only · Not for Human or Veterinary or Therapeutic Use

Tel:781-999-4286 E\_mail:info@targetmol.com Address:34 Washington Street,Wellesley Hills,MA 02481