

Anti-SLC16A1 Polyclonal Antibody

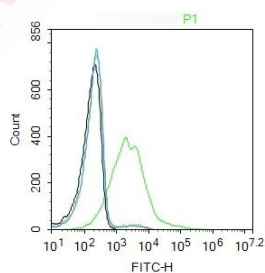
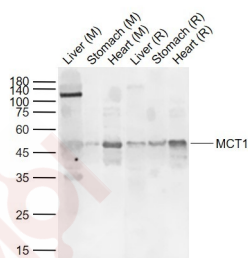
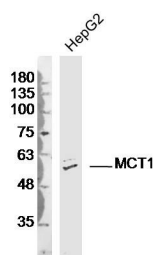
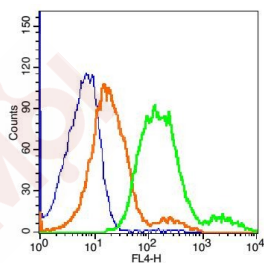
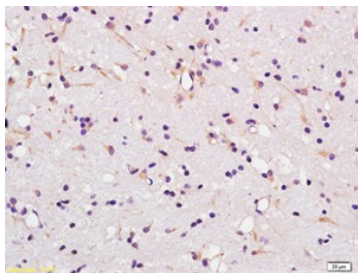
Product Details

Ig Type:	IgG
Reactivity:	Human,Mouse,Rat (predicted:Dog,Pig,Cow,Horse,Rabbit,GuineaPig)
Molecular Weight:	Theoretical: 55 kDa. Actual: 55 kDa.
Purification:	Protein A purified

Applications

1. Paraformaldehyde-fixed, paraffin embedded (rat brain); Antigen retrieval by boiling in sodium citrate buffer (pH6.0) for 15 min; Block endogenous peroxidase by 3% hydrogen peroxide for 20 min; Blocking buffer (normal goat serum) at 37°C for 30 min; Antibody incubation with (MCT1) Polyclonal Antibody, Unconjugated (TMAB-01702) at 1:400 overnight at 4°C, followed by operating according to SP Kit (Rabbit) instructions and DAB staining.
2. Blank control: MCF7 Cells (blue). Primary Antibody: Rabbit Anti-MCT1/AF647 Conjugated antibody (TMAB-01702-AF647), Dilution: 1 µg in 100 µL 1X PBS containing 0.5% BSA; Isotype Control Antibody: Rabbit IgG/FITC (orange), used under the same conditions.
3. Sample: HepG2 (Human) cell Lysate at 40 µg
Primary: Anti-MCT1 (TMAB-01702) at 1/300 dilution
Secondary: IRDye800CW Goat Anti-Rabbit IgG at 1/20000 dilution
Predicted band size: 55 kDa
Observed band size: 55 kDa
4. Sample:
Lane 1: Liver (Mouse) Lysate at 40 µg
Lane 2: Stomach (Mouse) Lysate at 40 µg
Lane 3: Heart (Mouse) Lysate at 40 µg
Lane 4: Liver (Rat) Lysate at 40 µg
Lane 5: Stomach (Rat) Lysate at 40 µg
Lane 6: Heart (Rat) Lysate at 40 µg
Primary: Anti-MCT1 (TMAB-01702) at 1/1000 dilution
Secondary: IRDye800CW Goat Anti-Rabbit IgG at 1/20000 dilution
Predicted band size: 48 kDa
Observed band size: 48 kDa
5. Blank control: K562. Primary Antibody (green line): Rabbit Anti-MCT1 antibody (TMAB-01702)
Dilution: 1 µg/10⁶ cells;
Isotype Control Antibody (orange line): Rabbit IgG.
Secondary Antibody: Goat anti-rabbit IgG-FITC
Dilution: 0.5 µg/test.
Protocol
The cells were incubated in 5% BSA to block non-specific protein-protein interactions for 30 min at room temperature. Cells stained with Primary Antibody for 30 min at room temperature. The secondary antibody used for 40 min at room temperature.

Verified Activity:



Application: WB,FCM

Recommended WB=1:500-2000,FCM=1μg/Test

Properties

Stability & Storage: Store at -20°C or -80°C for 12 months. Avoid repeated freeze-thaw cycles.

Shipping: Shipping with blue ice.

Antigen Details

Immunogen: KLH conjugated synthetic peptide: human MCT1
Antigen Species: Human
Gene ID: 6566
Uniprot ID: P53985
Synonyms: Monocarboxylate transporter 1;MCT1;Solute carrier family 16 member 1;MCT 1

Research Background

The protein encoded by this gene is a proton-linked monocarboxylate transporter that catalyzes the movement of many monocarboxylates, such as lactate and pyruvate, across the plasma membrane. Mutations in this gene are associated with erythrocyte lactate transporter defect. Alternatively spliced transcript variants have been found for this gene.[provided by RefSeq, Oct 2009]

Inhibitor · Natural Compounds · Compound Libraries · Recombinant Proteins

This product is for Research Use Only · Not for Human or Veterinary or Therapeutic Use

Tel:781-999-4286 E_mail:info@targetmol.com Address:34 Washington Street,Wellesley Hills,MA 02481