

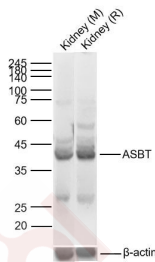
Anti-SLC10A2 Polyclonal Antibody 2

Product Details

Ig Type: IgG
Reactivity: Mouse,Rat
Molecular Weight: Theoretical: 38 kDa. Actual: 38 kDa.
Purification: Protein A purified

Applications

Sample:
Lane 1: Mouse Kidney Lysates
Lane 2: Rat Kidney Lysates
Verified Activity: Primary: Anti-ASBT/SLC10A2 (TMAB-01701) at 1/1000 dilution
Secondary: IRDye800CW Goat Anti-Rabbit IgG at 1/20000 dilution
Predicted band size: 38 kDa
Observed band size: 38 kDa



Application: ELISA,WB
Recommended WB: 1:500-2000; ELISA: 1:5000-10000

Properties

Stability & Storage: Store at -20°C or -80°C for 12 months. Avoid repeated freeze-thaw cycles.
Shipping: Shipping with blue ice.

Antigen Details

Immunogen: KLH conjugated synthetic peptide: mouse ASBT
Antigen Species: Mouse
Gene ID: 20494
Uniprot ID: P70172
Synonyms: ISBT;Na⁺-dependent ileal bile acid transporter;Solute carrier family 10 member 2;Ileal sodium/bile acid cotransporter;Ileal sodium dependent bile acid transporter;NTCP2;solute carrier family 10(sodium/bile acid cotransporter family);Apical sodium dependent bile acid transporter;Sodium/taurocholate cotransporting polypeptide, ileal;ASBT;Na⁺-bile acid cotransporter
Biology Area: Metabolism of lipids and lipoproteins,Lipid metabolism,Lipid metabolism,Channels

Research Background

SLC10A2 plays a critical role in reabsorption of bile acids from the the small intestine lumen. Passive flow of sodium ions down their concentration gradient is coupled to bile acid movement, resulting in an increase in the concentration of bile acids in the interior of the cell. This action conserves the body's pool of re-circulating bile acid. SLC10A2 also plays a key role in cholesterol metabolism as cholesterol is the precursor molecule in bile acid synthesis mediated by CYP7A and FXR.

Inhibitor · Natural Compounds · Compound Libraries · Recombinant Proteins

This product is for Research Use Only· Not for Human or Veterinary or Therapeutic Use

Tel:781-999-4286 E_mail:info@targetmol.com Address:34 Washington Street,Wellesley Hills,MA 02481