

Anti-SLC10A1 Polyclonal Antibody

Product Details

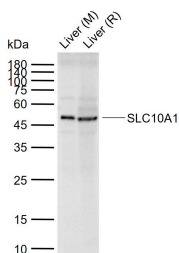
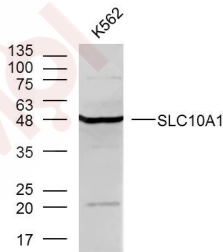
Ig Type: IgG
Reactivity: Rat, Mouse
Molecular Weight: Theoretical: 38 kDa. Actual: 48 kDa.
Purification: Protein A purified

Applications

1. Sample: K562 (human) cell Lysate at 40 µg
Primary: Anti-SLC10A1 (TMAB-01699) at 1/300 dilution
Secondary: IRDye800CW Goat Anti-Rabbit IgG at 1/20000 dilution
Predicted band size: 38 kDa
Observed band size: 48 kDa

Verified Activity:

2. Sample:
Lane 1: Mouse Liver tissue lysates
Lane 2: Rat Liver tissue lysates
Primary: Anti-SLC10A1 (TMAB-01699) at 1/1000 dilution
Secondary: IRDye800CW Goat Anti-Rabbit IgG at 1/20000 dilution
Predicted band size: 38 kDa
Observed band size: 48 kDa



Application: WB
Recommended WB: 1:500-2000

Properties

Stability & Storage: Store at -20°C or -80°C for 12 months. Avoid repeated freeze-thaw cycles.

Shipping: Shipping with blue ice.

Antigen Details

Immunogen: KLH conjugated synthetic peptide: mouse NTCP

Antigen Species: Mouse

Gene ID: 20493

Uniprot ID: O08705

Synonyms: Na(+)/bile acid cotransporter; Cell growth-inhibiting gene 29 protein; Solute carrier family 10 member 1 (SLC10A1); Na(+)/taurocholate transport protein; Hepatic sodium/bile acid cotransporter; Sodium/taurocholate cotransporting polypeptide (NTCP); SLC10A1; NTCP

Research Background

Sodium/bile acid cotransporters are integral membrane glycoproteins that participate in the enterohepatic circulation of bile acids. Two homologous transporters are involved in the reabsorption of bile acids, one absorbing from the intestinal lumen, the bile duct, and the kidney with an apical localization (SLC10A2; MIM 601295), and the other being found in the basolateral membranes of hepatocytes (SLC10A1). [supplied by OMIM]

Inhibitor · Natural Compounds · Compound Libraries · Recombinant Proteins

This product is for Research Use Only · Not for Human or Veterinary or Therapeutic Use

Tel: 781-999-4286 E_mail: info@targetmol.com Address: 34 Washington Street, Wellesley Hills, MA 02481