

Anti-SKP2 Polyclonal Antibody

Product Details

Ig Type:	IgG
Reactivity:	Human, Mouse, Rat (predicted: Cow, Rabbit)
Molecular Weight:	Theoretical: 48 kDa. Actual: 46 kDa.
Purification:	Protein A purified

Applications

1. Sample:

- Lane 1: Mouse Placenta tissue lysates
- Lane 2: Mouse Cerebrum tissue lysates
- Lane 3: Rat Placenta tissue lysates
- Lane 4: Rat Cerebrum tissue lysates
- Lane 5: Human 293T cell lysates

Primary: Anti-SKP2 (TMAB-01697) at 1/1000 dilution

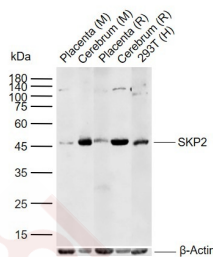
Secondary: IRDye800CW Goat Anti-Rabbit IgG at 1/20000 dilution

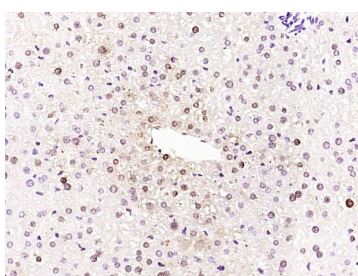
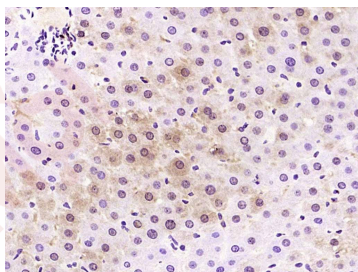
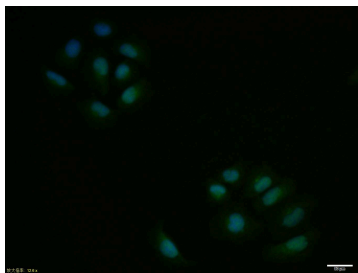
Predicted band size: 48 kDa

Observed band size: 46 kDa

Verified Activity:

2. HeLa cell; 4% Paraformaldehyde-fixed; Triton X-100 at room temperature for 20 min; Blocking buffer (normal goat serum) at 37°C for 20 min; Antibody incubation with (SKP2) polyclonal Antibody, Unconjugated (TMAB-01697) 1:100, 90 minutes at 37°C; followed by a conjugated Goat Anti-Rabbit IgG antibody at 37°C for 90 minutes, DAPI (blue) was used to stain the cell nucleus.
3. Paraformaldehyde-fixed, paraffin embedded (rat liver); Antigen retrieval by boiling in sodium citrate buffer (pH6.0) for 15 min; Block endogenous peroxidase by 3% hydrogen peroxide for 20 min; Blocking buffer (normal goat serum) at 37°C for 30 min; Antibody incubation with (SKP2) Polyclonal Antibody, Unconjugated (TMAB-01697) at 1:200 overnight at 4°C, followed by operating according to SP Kit (Rabbit) instructions and DAB staining.
4. Paraformaldehyde-fixed, paraffin embedded (mouse liver); Antigen retrieval by boiling in sodium citrate buffer (pH6.0) for 15 min; Block endogenous peroxidase by 3% hydrogen peroxide for 20 min; Blocking buffer (normal goat serum) at 37°C for 30 min; Antibody incubation with (SKP2) Polyclonal Antibody, Unconjugated (TMAB-01697) at 1:200 overnight at 4°C, followed by operating according to SP Kit (Rabbit) instructions and DAB staining.





Application: ICC/IF,IF,IHC-Fr,IHC-P,WB

Recommended ICC/IF=1:100-500; IF=1:100-500; IHC-Fr=1:100-500; IHC-P=1:100-500; WB=1:500-2000

Properties

Stability & Storage: Store at -20°C or -80°C for 12 months. Avoid repeated freeze-thaw cycles.

Shipping: Shipping with blue ice.

Antigen Details

Immunogen: KLH conjugated synthetic peptide: human Skp2

Antigen Species: Human

Gene ID: 6502

Uniprot ID: Q13309

Biology Area: Oncoproteins,Transcription factors/regulators,F Box E3 Ligase

Research Background

Substrate recognition component of a SCF(SKP1-CUL1-F-box protein) E3 ubiquitin-protein ligase complex which mediates the ubiquitination and subsequent proteasomal degradation of target proteins involved in cell cycle progression, signal transduction and transcription. Specifically recognizes phosphorylated CDKN1B/p27kip and is involved in regulation of G1/S transition. Degradation of CDKN1B/p27kip also requires CKS1. Recognizes target proteins ORC1L, CDT1, RBL2, MLL, CDK9, RAG2, FOXO1A, UBP43, and probably MYC, TOB1 and TAL1. Degradation of TAL1 also requires STUB1. Recognizes CDKN1A in association with CCNE1 or CCNE2 and CDK2. [PATHWAY] Protein modification; protein ubiquitination. [SUBUNIT] Part of the SCF(SKP2) complex consisting of CUL1, RBX1, SKP1 and SKP2. Interacts directly with CUL1 and SKP1. Interacts with CKS1. Interacts with the cyclin A-CDK2 complex. Interacts with ORC1L, phosphorylated CDT1, phosphorylated RBL2, ELF4, phosphorylated RAG2, FOXO1A, UBP43, MYC, TOB1, TAL1 and MLL. [SIMILARITY] Contains 1 F-box domain. [SIMILARITY] Contains 8 LRR (leucine-rich) repeats.

Inhibitor · Natural Compounds · Compound Libraries · Recombinant Proteins

This product is for Research Use Only · Not for Human or Veterinary or Therapeutic Use

Tel:781-999-4286 E_mail:info@targetmol.com Address:34 Washington Street,Wellesley Hills,MA 02481