

Anti-SKA3 Polyclonal Antibody

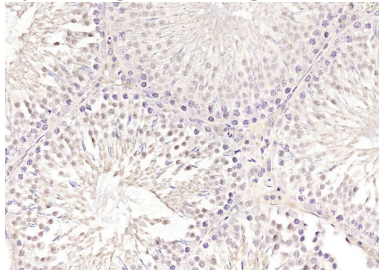
Product Details

Ig Type:	IgG
Reactivity:	Rat (predicted: Human, Mouse, Chicken, Cow, Horse, Rabbit, Sheep)
Molecular Weight:	Theoretical: 46 kDa.
Purification:	Protein A purified

Applications

Verified Activity:

Paraformaldehyde-fixed, paraffin embedded (rat testis); Antigen retrieval by boiling in sodium citrate buffer (pH6.0) for 15 min; Block endogenous peroxidase by 3% hydrogen peroxide for 20 min; Blocking buffer (normal goat serum) at 37°C for 30 min; Antibody incubation with (SKA3) Polyclonal Antibody, Unconjugated (TMAB-01696) at 1:200 overnight at 4°C, followed by operating according to SP Kit (Rabbit) instructions and DAB staining.



Application:	IF, IHC-Fr, IHC-P
Recommended	IHC-P: 1:100-500; IHC-Fr: 1:100-500; IF: 1:100-500

Properties

Stability & Storage:	Store at -20°C or -80°C for 12 months. Avoid repeated freeze-thaw cycles.
Shipping:	Shipping with blue ice.

Antigen Details

Immunogen:	KLH conjugated synthetic peptide: human SKA3
Antigen Species:	Human
Gene ID:	221150
Uniprot ID:	Q8IX90
Synonyms:	Spindle and kinetochore associated complex subunit 3; C13orf3; RAMA1; SKA 3; Spindle and kinetochore-associated protein 3
Biology Area:	Spindle

Research Background

Component of the SKA1 complex, a microtubule-binding subcomplex of the outer kinetochore that is essential for proper chromosome segregation. The SKA1 complex is a direct component of the kinetochore-microtubule interface and directly associates with microtubules as oligomeric assemblies. The complex facilitates the processive movement of microspheres along a microtubule in a depolymerization-coupled manner. In the complex, it mediates

the microtubule-stimulated oligomerization.

Inhibitor · Natural Compounds · Compound Libraries · Recombinant Proteins

This product is for Research Use Only · Not for Human or Veterinary or Therapeutic Use

Tel:781-999-4286 E_mail:info@targetmol.com Address:34 Washington Street,Wellesley Hills,MA 02481