

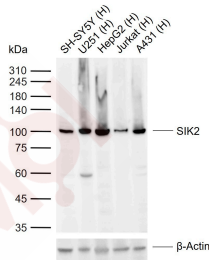
## Anti-SIK2 Polyclonal Antibody

### Product Details

**Ig Type:** IgG  
**Reactivity:** Human (predicted:Mouse)  
**Molecular Weight:** Theoretical: 104 kDa. Actual: 100 kDa.  
**Purification:** Protein A purified

### Applications

**Sample:**  
 Lane 1: Human SH-SY5Y cell lysates  
 Lane 2: Human U251 cell lysates  
 Lane 3: Human HepG2 cell lysates  
 Lane 4: Human Jurkat cell lysates  
 Lane 5: Human A431 cell lysates  
**Verified Activity:**  
 Primary: Anti-SIK2 (TMAB-01689) at 1/1000 dilution  
 Secondary: IRDye800CW Goat Anti-Rabbit IgG at 1/20000 dilution  
 Predicted band size: 104 kDa  
 Observed band size: 100 kDa



**Application:** ELISA, WB  
**Recommended** WB: 1:500-2000; ELISA: 1:5000-10000

### Properties

**Stability & Storage:** Store at -20°C or -80°C for 12 months. Avoid repeated freeze-thaw cycles.  
**Shipping:** Shipping with blue ice.

### Antigen Details

**Immunogen:** KLH conjugated synthetic peptide: human SNF1LK2/SIK2  
**Antigen Species:** Human  
**Gene ID:** 23235  
**Uniprot ID:** Q9H0K1  
**Synonyms:** Salt inducible kinase 2; SNF1LK2; SIK2; SIK-2; DKFZp434K1115; Salt inducible protein kinase 2; EC 2.7.11.1; Salt inducible serine/threonine kinase 2; Salt-inducible protein kinase 2; Serine/threonine protein kinase SNF1 like kinase 2; SNF1 like kinase; SNF1 like kinase 2; Serine/threonine protein kinase SIK2; Qin-induced kinase; LOH11CR11; KIAA0781; QIK

Biology Area: Diabetes associated,Insulin / Insulin-like,Other Kinases

---

**Research Background**

Phosphorylates 'Ser-794' of IRS1 in insulin-stimulated adipocytes, potentially modulating the efficiency of insulin signal transduction. Inhibits CREB activity by phosphorylating and repressing TORCs, the CREB-specific coactivators.

**Inhibitor · Natural Compounds · Compound Libraries · Recombinant Proteins**

This product is for Research Use Only· Not for Human or Veterinary or Therapeutic Use

Tel:781-999-4286 E\_mail:info@targetmol.com Address:34 Washington Street,Wellesley Hills,MA 02481