

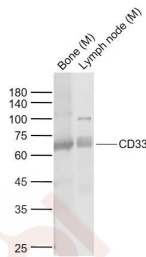
## Anti-Siglec-3/CD33 Polyclonal Antibody

### Product Details

Ig Type: IgG  
Reactivity: Human  
Molecular Weight: Theoretical: 40/37 kDa. Actual: 60-70 kDa.  
Purification: Protein A purified

### Applications

Sample:  
Lane 1: Bone (Mouse) Lysate at 40 µg  
Lane 2: Lymphnode (Mouse) Lysate at 40 µg  
Verified Activity: Primary: Anti-CD33 (TMAB-01688) at 1/1000 dilution  
Secondary: IRDye800CW Goat Anti-Rabbit IgG at 1/20000 dilution  
Predicted band size: 40/37 kDa  
Observed band size: 65 kDa



Application: WB,FCM  
Recommended WB=1:500-2000,FCM=1:100-200

### Properties

Stability & Storage: Store at -20°C or -80°C for 12 months. Avoid repeated freeze-thaw cycles.  
Shipping: Shipping with blue ice.

### Antigen Details

Immunogen: KLH conjugated synthetic peptide: mouse CD33  
Antigen Species: Mouse  
Gene ID: 12489  
Uniprot ID: Q63994  
Synonyms: Siglec-3;CD33 molecule;gp67  
Biology Area: Myeloid Cells,Human Lineage Negative

### Research Background

Enables protein phosphatase binding activity and sialic acid binding activity. Involved in several processes, including negative regulation of cytokine production; negative regulation of monocyte activation; and positive

## A DRUG SCREENING EXPERT

---

regulation of protein tyrosine phosphatase activity. Located in several cellular components, including Golgi apparatus; external side of plasma membrane; and peroxisome. [provided by Alliance of Genome Resources, Apr 2022]

**Inhibitor · Natural Compounds · Compound Libraries · Recombinant Proteins**

This product is for Research Use Only · Not for Human or Veterinary or Therapeutic Use

Tel:781-999-4286 E\_mail:info@targetmol.com Address:34 Washington Street,Wellesley Hills,MA 02481