

Anti-SDF-1/CXCL12 Polyclonal Antibody

Product Details

Ig Type:	IgG
Reactivity:	Human, Mouse (predicted: Rat, Chicken, Dog, Pig, Guinea Pig, Rabbit)
Molecular Weight:	Theoretical: 8 kDa. Actual: 10 kDa.
Purification:	Protein A purified

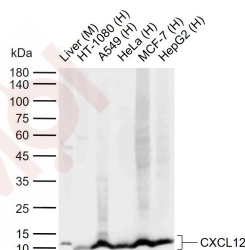
Applications

Sample:

Lane 1: Mouse Liver tissue lysates
Lane 2: Human HT-1080 tissue lysates
Lane 3: Human A549 cell lysates
Lane 4: Human HeLa cell lysates

Verified Activity:

Lane 5: Human MCF-7 cell lysates
Lane 6: Human HepG2 cell lysates
Primary: Anti-CXCL12 (TMAB-01671) at 1/1000 dilution
Secondary: IRDye800CW Goat Anti-Rabbit IgG at 1/20000 dilution
Predicted band size: 8 kDa
Observed band size: 10 kDa



Application: ELISA, IF, IHC-Fr, IHC-P, WB

Recommended: ELISA=1:5000-10000; IF=1:100-500; IHC-Fr=1:100-500; IHC-P=1:100-500; WB=1:500-2000

Properties

Stability & Storage: Store at -20°C or -80°C for 12 months. Avoid repeated freeze-thaw cycles.

Shipping: Shipping with blue ice.

Antigen Details

Immunogen: KLH conjugated synthetic peptide: human SDF-1/CXCL12
Antigen Species: Human
Gene ID: 6387
Uniprot ID: P48061
Synonyms: SDF-1;PBSF;TPAR1;SCYB12;SDF1;TLSF;chemokine (C-X-C motif) ligand 12;IRH
Biology Area: Chemokines,Alpha Chemokines (CXC),Host Virus Interaction

Research Background

This gene encodes a stromal cell-derived alpha chemokine member of the intercrine family. The encoded protein functions as the ligand for the G-protein coupled receptor, chemokine (C-X-C motif) receptor 4, and plays a role in many diverse cellular functions, including embryogenesis, immune surveillance, inflammation response, tissue homeostasis, and tumor growth and metastasis. Mutations in this gene are associated with resistance to human immunodeficiency virus type 1 infections. Multiple transcript variants encoding different isoforms have been found for this gene. [provided by RefSeq, May 2013].

Inhibitor · Natural Compounds · Compound Libraries · Recombinant Proteins

This product is for Research Use Only · Not for Human or Veterinary or Therapeutic Use

Tel:781-999-4286 E_mail:info@targetmol.com Address:34 Washington Street,Wellesley Hills,MA 02481