

Anti-RAMP1 Polyclonal Antibody

Product Details

Ig Type:	IgG
Reactivity:	Human,Rat
Molecular Weight:	Theoretical: 14 kDa. Actual: 16 kDa.
Purification:	Protein A purified

Applications

Sample:

Lane 1: Rat Heart tissue lysates

Lane 2: Rat Pancreas tissue lysates

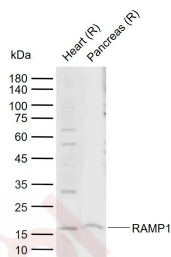
Verified Activity:

Primary: Anti-RAMP1 (TMAB-01607) at 1/1000 dilution

Secondary: IRDye800CW Goat Anti-Rabbit IgG at 1/20000 dilution

Predicted band size: 14 kDa

Observed band size: 16 kDa



Application:	ELISA,WB
Recommended	WB: 1:500-2000; ELISA: 1:5000-10000

Properties

Stability & Storage:	Store at -20°C or -80°C for 12 months. Avoid repeated freeze-thaw cycles.
Shipping:	Shipping with blue ice.

Antigen Details

Immunogen:	KLH conjugated synthetic peptide: human RAMP1
Antigen Species:	Human
Gene ID:	10267
Uniprot ID:	O60894
Synonyms:	Calcitonin-receptor-like receptor activity-modifying protein 1; Receptor activity-modifying protein 1
Biology Area:	More GPCR, More Neuropeptides, GPCR

Research Background

The protein encoded by this gene is a member of the RAMP family of single transmembrane domain proteins, called receptor (calcitonin) activity modifying proteins (RAMPs). RAMPs are type I transmembrane proteins with an

A DRUG SCREENING EXPERT

extracellular N terminus and a cytoplasmic C terminus. RAMPs are required to transport calcitonin receptor like receptor (CRLR) to the plasma membrane. CRLR, a receptor with seven transmembrane domains, can function as either a calcitonin gene related peptide (CGRP) receptor or an adrenomedullin receptor, depending on which members of the RAMP family are expressed. In the presence of this (RAMP1) protein, CRLR functions as a CGRP receptor. The RAMP1 protein is involved in the terminal glycosylation, maturation, and presentation of the CGRP receptor to the cell surface.

Inhibitor · Natural Compounds · Compound Libraries · Recombinant Proteins

This product is for Research Use Only· Not for Human or Veterinary or Therapeutic Use

Tel:781-999-4286 E_mail:info@targetmol.com Address:34 Washington Street,Wellesley Hills,MA 02481