

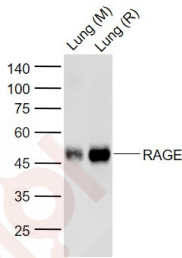
Anti-RAGE Antibody (1W320)

Product Details

Ig Type:	IgG
Reactivity:	Mouse,Rat,Human
Molecular Weight:	Theoretical: 42 kDa. Actual: 40-45 kDa.
Clone:	1W320
Purification:	Protein A purified

Applications

Sample:	Lane 1: Lung (Mouse) Lysate at 40 µg Lane 2: Lung (Rat) Lysate at 40 µg
Verified Activity:	Primary: Anti-RAGE (TMAB-01606) at 1/1000 dilution Secondary: IRDye800CW Goat Anti-Rabbit IgG at 1/20000 dilution Predicted band size: 43 kDa Observed band size: 46 kDa



Application:	IF,IHC-Fr,IHC-P,WB
Recommended	IF=1:100-500; IHC-Fr=1:100-500; IHC-P=1:100-500; WB=1:500-2000

Properties

Stability & Storage:	Store at -20°C or -80°C for 12 months. Avoid repeated freeze-thaw cycles.
Shipping:	Shipping with blue ice.

Antigen Details

Immunogen:	KLH conjugated synthetic peptide: mouse RAGE
Antigen Species:	Mouse
Gene ID:	11596
Uniprot ID:	Q62151
Synonyms:	RAGE;AGER;advanced glycosylation end product-specific receptor
Biology Area:	Diabetes associated,Inflammatory mediators,Amyloid,Alzheimer's disease,Visual system

Research Background

Advanced glycosylation end product-specific receptor (AGER; RAGE) is a member of the immunoglobulin superfamily of cell surface molecules that binds molecules that have been irreversibly modified by non-enzymatic glycation and oxidation, and are known as advanced glycation end products (AGEs). It is expressed by endothelium, mononuclear phagocytes, neurons and smooth muscle cells. Whereas RAGE is present at high levels during development, especially in the central nervous system, its levels decline during maturity. The increased expression of RAGE is associated with several pathological states, such as diabetic vasculopathy, neuropathy, retinopathy and other disorders, including Alzheimer's disease and immune/inflammatory reactions of the vessel walls. In diabetic tissues, the production of RAGE is due to the overproduction of AGEs that eventually overwhelm the protective properties of RAGE. This results in oxidative stress and endothelial cell dysfunction that leads to vascular disease in diabetics. In the brain, RAGE also binds amyloid beta (Ab). Because Ab is overproduced in neurons and vessels in the brains of Alzheimer disease, this leads to the hyperstimulation of RAGE. The RAGE-Ab interaction is thought to result in oxidative stress leading to neuronal degeneration.

Inhibitor · Natural Compounds · Compound Libraries · Recombinant Proteins

This product is for Research Use Only · Not for Human or Veterinary or Therapeutic Use

Tel: 781-999-4286 E_mail: info@targetmol.com Address: 34 Washington Street, Wellesley Hills, MA 02481