

## Anti-RAC1 Polyclonal Antibody

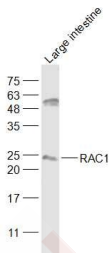
### Product Details

Ig Type:	IgG
Reactivity:	Human, Mouse (predicted: Rat, Chicken, Dog, Pig, Cow, Horse, Rabbit, Sheep, Guinea Pig)
Molecular Weight:	Theoretical: 22 kDa. Actual: 23 kDa.
Purification:	Protein A purified

### Applications

Sample:	Large intestine (Mouse) Lysate at 40 µg
Primary:	Anti-RAC1 (TMAB-01602) at 1/1000 dilution
Secondary:	IRDye800CW Goat Anti-Rabbit IgG at 1/20000 dilution
Predicted band size:	22 kDa
Observed band size:	23 kDa

Verified Activity:



Application:	WB
Recommended	WB: 1:500-2000

### Properties

Stability & Storage:	Store at -20°C or -80°C for 12 months. Avoid repeated freeze-thaw cycles.
Shipping:	Shipping with blue ice.

### Antigen Details

Immunogen:	KLH conjugated synthetic peptide: human RAC1
Antigen Species:	Human
Gene ID:	5879
Uniprot ID:	P63000
Synonyms:	TC-25; Rac-1; ras-related C3 botulinum toxin substrate 1 (rho family, small GTP binding protein Rac1); MIG5; p21-Rac1
Biology Area:	Ras family, TLR Signaling, Ras Family

### Research Background

The protein encoded by this gene is a GTPase which belongs to the RAS superfamily of small GTP-binding proteins. Members of this superfamily appear to regulate a diverse array of cellular events, including the control of cell growth, cytoskeletal reorganization, and the activation of protein kinases. Two transcript variants encoding different

isoforms have been found for this gene. [provided by RefSeq, Mar 2009]

**Inhibitor · Natural Compounds · Compound Libraries · Recombinant Proteins**

This product is for Research Use Only · Not for Human or Veterinary or Therapeutic Use

Tel:781-999-4286 E\_mail:info@targetmol.com Address:34 Washington Street,Wellesley Hills,MA 02481