

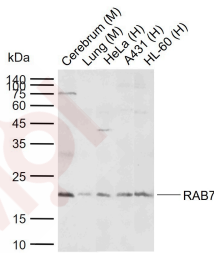
Anti-RAB7A Polyclonal Antibody

Product Details

Ig Type: IgG
 Reactivity: Human, Mouse (predicted: Rat)
 Molecular Weight: Theoretical: 23 kDa. Actual: 21 kDa.
 Purification: Protein A purified

Applications

Sample:
 Lane 1: Mouse Cerebrum tissue lysates
 Lane 2: Mouse Lung tissue lysates
 Lane 3: Human HeLa cell lysates
 Lane 4: Human A431 cell lysates
 Lane 5: Human HL-60 cell lysates
 Verified Activity:
 Primary: Anti-RAB7 (TMAB-01601) at 1/1000 dilution
 Secondary: IRDye800CW Goat Anti-Rabbit IgG at 1/20000 dilution
 Predicted band size: 23 kDa
 Observed band size: 21 kDa



Application: WB
 Recommended WB=1:500-2000

Properties

Stability & Storage: Store at -20°C or -80°C for 12 months. Avoid repeated freeze-thaw cycles.
 Shipping: Shipping with blue ice.

Antigen Details

Immunogen: KLH conjugated synthetic peptide: human RAB7A
 Antigen Species: Human
 Gene ID: 7879
 Uniprot ID: P51149
 Synonyms: RAB7A, member RAS oncogene family; Rab7
 Biology Area: Regulation, Ras Family, Endosome, Lysosome

Research Background

Members of the RAB family of RAS related GTP binding proteins are important regulators of vesicular transport and are located in specific intracellular compartments. RAB7 has been localized to late endosomes and shown to be important in the late endocytic pathway. In addition, it has been shown to have a fundamental role in the cellular vacuolation induced by the cytotoxin VacA of Helicobacter pylori.

Inhibitor · Natural Compounds · Compound Libraries · Recombinant Proteins

This product is for Research Use Only· Not for Human or Veterinary or Therapeutic Use

Tel:781-999-4286 E_mail:info@targetmol.com Address:34 Washington Street,Wellesley Hills,MA 02481