

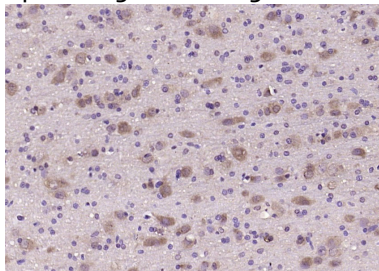
## Anti-RAB11A Polyclonal Antibody

## Product Details

Ig Type:	IgG
Reactivity:	Rat (predicted:Human,Mouse,Chicken,Pig,Cow,Horse,Sheep)
Molecular Weight:	Theoretical: 24 kDa.
Purification:	Protein A purified

## Applications

Verified Activity: Paraformaldehyde-fixed, paraffin embedded (rat brain); Antigen retrieval by boiling in sodium citrate buffer (pH6.0) for 15 min; Block endogenous peroxidase by 3% hydrogen peroxide for 20 min; Blocking buffer (normal goat serum) at 37°C for 30 min; Antibody incubation with (Rab11) Polyclonal Antibody, Unconjugated (TMAB-01600) at 1:200 overnight at 4°C, followed by operating according to SP Kit (Rabbit) instructions and DAB staining.



Application:	IF,IHC-Fr,IHC-P
Recommended	IHC-P: 1:100-500; IHC-Fr: 1:100-500; IF: 1:100-500

## Properties

Stability & Storage:	Store at -20°C or -80°C for 12 months. Avoid repeated freeze-thaw cycles.
Shipping:	Shipping with blue ice.

## Antigen Details

Immunogen:	KLH conjugated synthetic peptide: human RAB11A
Antigen Species:	Human
Gene ID:	8766
Uniprot ID:	P62491
Synonyms:	Rab-11;RAB11A;Ras-related protein Rab-11A;RAB11;YL8
Biology Area:	Ras family,Regulation,Ras Family

## Research Background

Rab proteins are low-molecular-weight GTP-binding proteins that form the largest branch of the Ras superfamily of GTPases. Located on the cytoplasmic face of organelles and vesicles, rab proteins are involved in intracellular membrane fusion reactions. Three membrane proteins, synaptosomal associated protein of 25 kDa (SNAP-25), synaptobrevin, and syntaxin, form the core of a ubiquitous membrane fusion machine that interacts with the soluble

## A DRUG SCREENING EXPERT

---

proteins N-ethylmaleimide-sensitive factor (NSF) and  $\alpha$ -SNAP. Rab proteins, in coordination with the core fusion machinery and Munc-18, help to mediate vesicle docking and fusion. There are over 40 Rab proteins in mammals. Rab11a and Rab11b are known markers for protein trafficking, sorting, and recycling in the endosomal pathway. The Rab11 proteins are enriched in recycling endosomes and the trans-Golgi network, where they regulate membrane recycling back to the plasma membrane. Rab11a is ubiquitously expressed, while Rab11b is expressed mainly in the heart and brain.

**Inhibitor · Natural Compounds · Compound Libraries · Recombinant Proteins**

This product is for Research Use Only · Not for Human or Veterinary or Therapeutic Use

Tel:781-999-4286 E\_mail:info@targetmol.com Address:34 Washington Street,Wellesley Hills,MA 02481