

## Anti-P-selectin Polyclonal Antibody

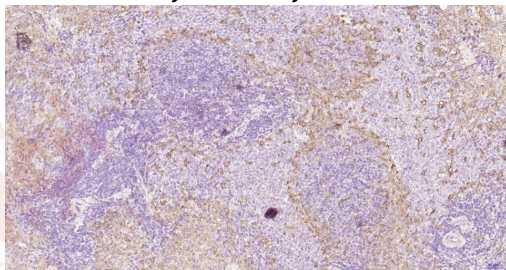
### Product Details

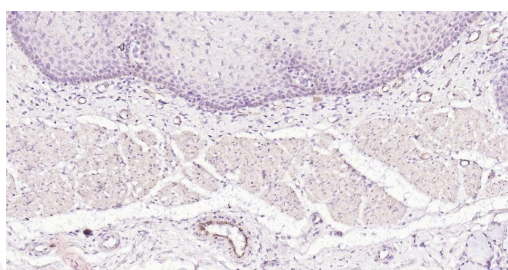
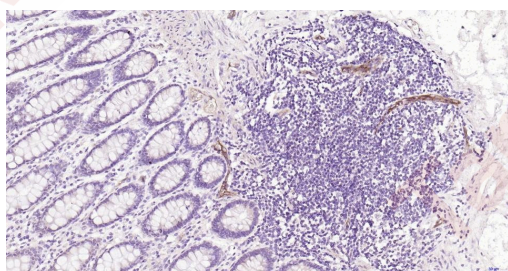
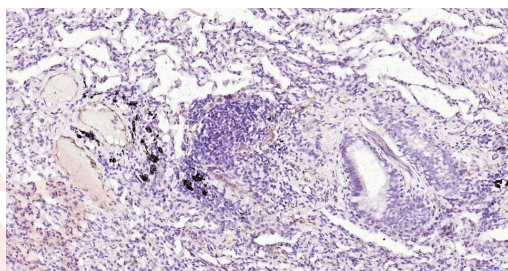
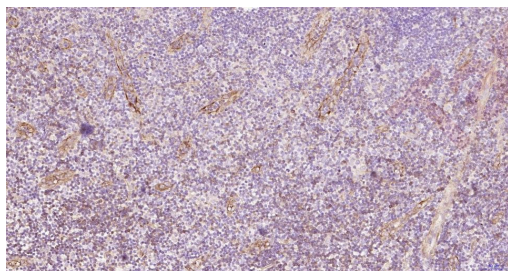
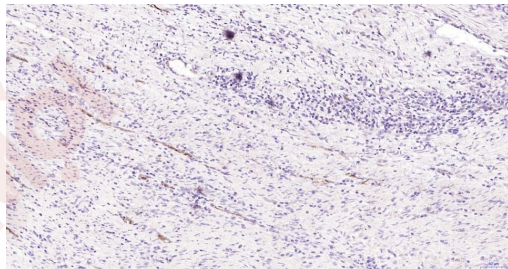
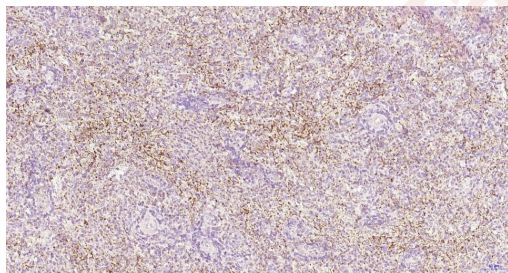
Ig Type:	IgG
Reactivity:	Human
Molecular Weight:	Theoretical: 88 kDa.
Purification:	Protein A purified

### Applications

#### Verified Activity:

1. Paraformaldehyde-fixed, paraffin embedded Rat Spleen; Antigen retrieval by boiling in sodium citrate buffer (pH6.0) for 15 min; Antibody incubation with CD62p Polyclonal Antibody, Unconjugated (TMAB-01587) at 1:100 overnight at 4°C, followed by conjugation to the secondary antibody and DAB staining.
2. Paraformaldehyde-fixed, paraffin embedded Human Spleen; Antigen retrieval by boiling in sodium citrate buffer (pH6.0) for 15 min; Antibody incubation with CD62p Polyclonal Antibody, Unconjugated (TMAB-01587) at 1:100 overnight at 4°C, followed by conjugation to the secondary antibody and DAB staining.
3. Paraformaldehyde-fixed, paraffin embedded Human Colon Cancer; Antigen retrieval by boiling in sodium citrate buffer (pH6.0) for 15 min; Antibody incubation with CD62p Polyclonal Antibody, Unconjugated (TMAB-01587) at 1:100 overnight at 4°C, followed by conjugation to the secondary antibody and DAB staining.
4. Paraformaldehyde-fixed, paraffin embedded Human Tonsil; Antigen retrieval by boiling in sodium citrate buffer (pH6.0) for 15 min; Antibody incubation with CD62p Polyclonal Antibody, Unconjugated (TMAB-01587) at 1:100 overnight at 4°C, followed by conjugation to the secondary antibody and DAB staining.
5. Paraformaldehyde-fixed, paraffin embedded Human Lung; Antigen retrieval by boiling in sodium citrate buffer (pH6.0) for 15 min; Antibody incubation with CD62p Polyclonal Antibody, Unconjugated (TMAB-01587) at 1:100 overnight at 4°C, followed by conjugation to the secondary antibody and DAB staining.
6. Paraformaldehyde-fixed, paraffin embedded Human Colon; Antigen retrieval by boiling in sodium citrate buffer (pH6.0) for 15 min; Antibody incubation with CD62p Polyclonal Antibody, Unconjugated (TMAB-01587) at 1:100 overnight at 4°C, followed by conjugation to the secondary antibody and DAB staining.
7. Paraformaldehyde-fixed, paraffin embedded Human Esophagus; Antigen retrieval by boiling in sodium citrate buffer (pH6.0) for 15 min; Antibody incubation with CD62p Polyclonal Antibody, Unconjugated (TMAB-01587) at 1:100 overnight at 4°C, followed by conjugation to the secondary antibody and DAB staining.





Application: IF,IHC-Fr,IHC-P

Recommended IF=1:100-500; IHC-Fr=1:100-500; IHC-P=1:100-500

## A DRUG SCREENING EXPERT

---

### Properties

Stability & Storage: Store at -20°C or -80°C for 12 months. Avoid repeated freeze-thaw cycles.

Shipping: Shipping with blue ice.

---

### Antigen Details

Immunogen: KLH conjugated synthetic peptide: human P-selectin

Antigen Species: Human

Gene ID: 6403

Uniprot ID: P16109

Synonyms: P-selectin;CD62 antigen-like family member P;PADGEM;Granule membrane protein 140; LECAM3;Leukocyte-endothelial cell adhesion molecule 3;GMP-140

Biology Area: Endothelial Cell Markers,Cell adhesion molecules,Platelets,Regulatory T Cells,Platelets, Thrombocytic Lineage

---

### Research Background

This gene encodes a 140 kDa protein that is stored in the alpha-granules of platelets and Weibel-Palade bodies of endothelial cells. This protein redistributes to the plasma membrane during platelet activation and degranulation and mediates the interaction of activated endothelial cells or platelets with leukocytes. The membrane protein is a calcium-dependent receptor that binds to sialylated forms of Lewis blood group carbohydrate antigens on neutrophils and monocytes. Alternative splice variants may occur but are not well documented. [provided by RefSeq, Jul 2008]

**Inhibitor · Natural Compounds · Compound Libraries · Recombinant Proteins**

This product is for Research Use Only · Not for Human or Veterinary or Therapeutic Use

Tel:781-999-4286 E\_mail:info@targetmol.com Address:34 Washington Street,Wellesley Hills,MA 02481