

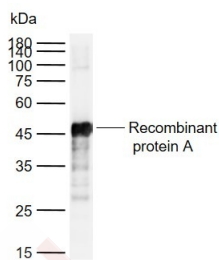
Anti-Protein A Polyclonal Antibody

Product Details

Ig Type:	IgG
Reactivity:	S.aureus
Molecular Weight:	Theoretical: 40-60 kDa. Actual: 41 kDa.
Purification:	Protein A purified

Applications

Verified Activity:	Sample:
	Lane 1: Recombinant protein A
	Primary: Anti-Protein A (TMAB-01581) at 1/1000 dilution
	Secondary: IRDye800CW Goat Anti-Rabbit IgG at 1/20000 dilution
	Predicted band size: 40-60 kDa
	Observed band size: 41 kDa



Application:	WB
Recommended	WB: 1:500-2000

Properties

Stability & Storage:	Store at -20°C or -80°C for 12 months. Avoid repeated freeze-thaw cycles.
Shipping:	Shipping with blue ice.

Antigen Details

Immunogen:	Recombinant Protein: protein A
Synonyms:	SPA_STAA8;Immunoglobulin G binding protein A;Staphylococcal protein A;gG-binding protein A;SPA
Biology Area:	Protein A

Research Background

Protein A is a 40-60 kDa surface protein originally found in the cell wall of the bacteria *Staphylococcus aureus* (SPA). SPA binds proteins from many of mammalian species, most notably IgGs, and helps inhibit phagocytic engulfment and acts as an immunological disguise via this type of interaction, thus the bacteria will disrupts opsonization and phagocytosis. SPA is known to bind with Fc region of immunoglobulins preferentially through interaction with the VH3 variable region of the heavy chain. SPA has been shown to bind with high affinity to human IgG1 and IgG2 as well as mouse IgG2a and IgG2b, whereas bind with moderate affinity to human IgM, IgA and IgE as well as mouse IgG3 and IgG1. SPA is often produced in *E. coli* and is practically coupled to other molecules such as enzymes, biotin,

A DRUG SCREENING EXPERT

radioactive iodine for use in immunology and other biological research. SPA is also immobilized onto solid supports such as agarose beads for total IgG purifying or interest protein or protein complex identifying in immunoprecipitation studies.

Inhibitor · Natural Compounds · Compound Libraries · Recombinant Proteins

This product is for Research Use Only· Not for Human or Veterinary or Therapeutic Use

Tel:781-999-4286 E_mail:info@targetmol.com Address:34 Washington Street,Wellesley Hills,MA 02481