

Anti-Promotilin Polyclonal Antibody

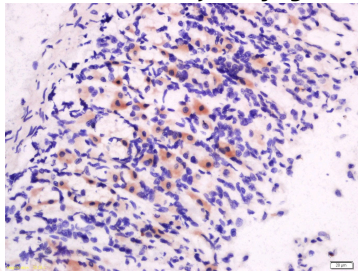
Product Details

Ig Type:	IgG
Reactivity:	Rat (predicted:Human,Dog,Cow,Horse,Rabbit,Sheep)
Molecular Weight:	Theoretical: 10.3 kDa.
Purification:	Protein A purified

Applications

Verified Activity:

Tissue/cell: Rat stomach tissue; 4% Paraformaldehyde-fixed and paraffin-embedded;
Antigen retrieval: citrate buffer (0.01M, pH6.0), Boiling bathing for 15 min; Block endogenous peroxidase by 3% Hydrogen peroxide for 30 min; Blocking buffer (normal goat serum) at 37°C for 20 min;
Incubation: Anti-Motilin Polyclonal Antibody, Unconjugated (TMAB-01580) 1:200, overnight at 4°C, followed by conjugation to the secondary antibody and DAB staining.



Application:	IF,IHC-Fr,IHC-P
Recommended	IHC-P: 1:100-500; IHC-Fr: 1:100-500; IF: 1:100-500

Properties

Stability & Storage:	Store at -20°C or -80°C for 12 months. Avoid repeated freeze-thaw cycles.
Shipping:	Shipping with blue ice.

Antigen Details

Immunogen:	KLH conjugated synthetic peptide: human MLN
Antigen Species:	Human
Gene ID:	4295
Uniprot ID:	P12872
Synonyms:	Promotilin;MLN

Research Background

The protein encoded by this gene is a member of a family that includes putative ATP-binding proteins involved in vesicle transport and fusion, 26S proteasome function, and assembly of peroxisomes. This protein, as a structural protein, is associated with clathrin, and heat-shock protein Hsc70, to form a complex. It has been implicated in a number of cellular events that are regulated during mitosis, including homotypic membrane fusion, spindle pole

body function, and ubiquitin-dependent protein degradation. [provided by RefSeq, Jul 2008]

Inhibitor · Natural Compounds · Compound Libraries · Recombinant Proteins

This product is for Research Use Only · Not for Human or Veterinary or Therapeutic Use

Tel:781-999-4286 E_mail:info@targetmol.com Address:34 Washington Street,Wellesley Hills,MA 02481