

Anti-POU5F1 Polyclonal Antibody

Product Details

Ig Type:	IgG
Reactivity:	Human,Mouse,Rat (predicted:Dog,Pig,Cow)
Molecular Weight:	Theoretical: 39 kDa. Actual: 47 kDa.
Purification:	Protein A purified

Applications

1. Sample:

Lane 1: Cerebrum (Mouse) Lysate at 40 µg

Lane 2: Heart (Mouse) Lysate at 40 µg

Lane 3: Cerebellum (Mouse) Lysate at 40 µg

Lane 4: Testis (Mouse) Lysate at 40 µg

Lane 5: Cerebrum (Rat) Lysate at 40 µg

Lane 6: Heart (Rat) Lysate at 40 µg

Lane 7: Cerebellum (Rat) Lysate at 40 µg

Primary: Anti-Oct4 (TMAB-01562) at 1/1000 dilution

Secondary: IRDye800CW Goat Anti-Rabbit IgG at 1/20000 dilution

Predicted band size: 45 kDa

Observed band size: 47 kDa

2. Blank control: Hela.

Primary Antibody (green line): Rabbit Anti-4-Oct antibody (TMAB-01562)

Dilution: 1 µg/10⁶ cells;

Isotype Control Antibody (orange line): Rabbit IgG.

Secondary Antibody: Goat anti-rabbit IgG-AF647

Dilution: 1 µg/test.

Verified Activity:

Protocol

The cells were fixed with 4% PFA (10 min at room temperature) and then permeabilized with 90% ice-cold methanol for 20 min at room temperature. The cells were then incubated in 5% BSA to block non-specific protein-protein interactions for 30 min at -20°C. Cells stained with Primary Antibody for 30 min at room temperature. The secondary antibody used for 40 min at room temperature.

3. Blank control (Black line): Mouse spleen (Black).

Primary Antibody (green line): Rabbit Anti-Oct4 antibody (TMAB-01562)

Dilution: 3 µg/10⁶ cells;

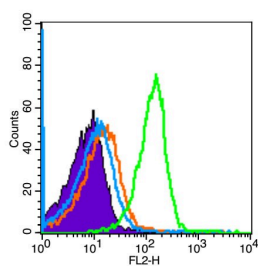
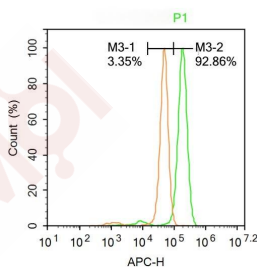
Isotype Control Antibody (orange line): Rabbit IgG.

Secondary Antibody (white blue line): Goat anti-rabbit IgG-PE

Dilution: 1 µg/test.

Protocol

The cells were fixed with 4% PFA (10 min at room temperature) and then permeabilized with 90% ice-cold methanol for 20 min at room temperature. The cells were then incubated in 5% BSA goat serum to block non-specific protein-protein interactions for 15 min at room temperature. Cells stained with Primary Antibody for 30 min at room temperature. The secondary antibody used for 40 min at room temperature.



Application: FCM,WB

Recommended WB: 1:500-2000; FCM: 1ug/Test

Properties

Stability & Storage: Store at -20°C or -80°C for 12 months. Avoid repeated freeze-thaw cycles.

Shipping: Shipping with blue ice.

Antigen Details

Immunogen: KLH conjugated synthetic peptide: human OCT4

Antigen Species: Human

Gene ID: 5460

Uniprot ID: Q01860

Synonyms: Octamer-binding protein 3 (Oct-3);Octamer-binding transcription factor 3 (OTF-3);POU domain, class 5, transcription factor 1;class 5;OTF3;POU5F1;Octamer-binding protein 4 (Oct-4);transcription factor 1

Biology Area: DNA / RNA binding,POU,Transcription Factors

Research Background

This gene encodes a transcription factor containing a POU homeodomain. This transcription factor plays a role in embryonic development, especially during early embryogenesis, and it is necessary for embryonic stem cell pluripotency. A translocation of this gene with the Ewing's sarcoma gene, t(6;22)(p21;q12), has been linked to tumor formation. Alternative splicing, as well as usage of alternative translation initiation codons, results in multiple isoforms, one of which initiates at a non-AUG (CUG) start codon. Related pseudogenes have been identified on chromosomes 1, 3, 8, 10, and 12. [provided by RefSeq].

Inhibitor · Natural Compounds · Compound Libraries · Recombinant Proteins

This product is for Research Use Only · Not for Human or Veterinary or Therapeutic Use

Tel:781-999-4286 E_mail:info@targetmol.com Address:34 Washington Street,Wellesley Hills,MA 02481