

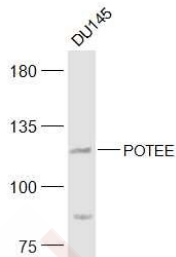
## Anti-POTEE Polyclonal Antibody

### Product Details

Ig Type:	IgG
Reactivity:	Human
Molecular Weight:	Theoretical: 121 kDa. Actual: 121 kDa.
Purification:	Protein A purified

### Applications

Sample:	DU145 (Human) Cell Lysate at 30 µg
Verified Activity:	Primary: Anti-POTEE (TMAB-01560) at 1/300 dilution Secondary: IRDye800CW Goat Anti-Rabbit IgG at 1/20000 dilution Predicted band size: 121 kDa Observed band size: 121 kDa



Application:	WB
Recommended	WB: 1:500-2000

### Properties

Stability & Storage:	Store at -20°C or -80°C for 12 months. Avoid repeated freeze-thaw cycles.
Shipping:	Shipping with blue ice.

### Antigen Details

Immunogen:	KLH conjugated synthetic peptide: human POTEE
Antigen Species:	Human
Gene ID:	445582
Uniprot ID:	Q6S8J3
Synonyms:	CT104.2;POTEE;A26C1A;POTE ankyrin domain family member E;POTE2gamma;POTE-2;A26C1;POTE2;Cancer/testis antigen family 104 member 2;Protein expressed in prostate, ovary, testis, and placenta 2;testis-expressed protein on chromosome 2;Prostate, ovary, testis expressed protein on chromosome 2;ANKRD26 like family C member 1A

### Research Background

POTEE (POTE Ankyrin Domain Family, Member E) is a Protein Coding gene. An important paralog of this gene is POTEJ.

**Inhibitor · Natural Compounds · Compound Libraries · Recombinant Proteins**

This product is for Research Use Only · Not for Human or Veterinary or Therapeutic Use

Tel:781-999-4286 E\_mail:info@targetmol.com Address:34 Washington Street,Wellesley Hills,MA 02481