

Anti-PODXL Polyclonal Antibody

Product Details

Ig Type:	IgG
Reactivity:	Human,Mouse,Rat
Molecular Weight:	Theoretical: 59 kDa. Actual: 59 kDa.
Purification:	Protein A purified

Applications

1. Tissue/cell: human kidney tissue; 4% Paraformaldehyde-fixed and paraffin-embedded; Antigen retrieval: citrate buffer (0.01M, pH6.0), Boiling bathing for 15 min; Block endogenous peroxidase by 3% Hydrogen peroxide for 30 min; Blocking buffer (normal goat serum) at 37°C for 20 min; Incubation: Anti-PCX Polyclonal Antibody, Unconjugated (TMAB-01558) 1:200, overnight at 4°C, followed by conjugation to the secondary antibody and DAb staining.

2. Sample: Kidney (Mouse) lysate at 30 µg;

Primary: Anti-PODXL (TMAB-01558) at 1:300 dilution;

Secondary: HRP conjugated Goat-Anti-Rabbit IgG (bse-0295G-HRP) at 1: 5000 dilution;

ECL excited the fluorescence;

Predicted band size: 59 kDa

Observed band size:59 kDa

3. Blank control: RSC96 (blue). Primary Antibody: Rabbit Anti-PODXL antibody ,used under the same conditions); Secondary Antibody: Goat anti-rabbit IgG-Pe (white blue), Dilution: 1:200 in 1 X PBS containing 0.5% BSA.

Protocol

The cells were fixed with 2% paraformaldehyde (10 min). Antibody (TMAB-01558, 0.2 µg/1x10⁶ cells) were incubated for 30 min on the ice, followed by 1 X PBS containing 0.5% BSA + 10% goat serum (15 min) to block non-specific protein-protein interactions. Then the Goat Anti-rabbit IgG/PE antibody was added into the blocking buffer mentioned above to react with the primary antibody of TMAB-01558 at 1/200 dilution for 30 min on ice.

4. Sample:

Liver (Mouse) Lysate at 40 µg

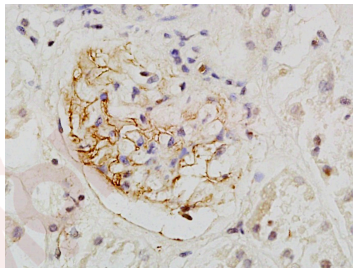
Primary: Anti-PODXL (TMAB-01558) at 1/1000 dilution

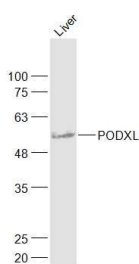
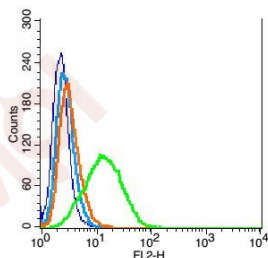
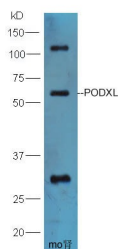
Secondary: IRDye800CW Goat Anti-Rabbit IgG at 1/20000 dilution

Predicted band size: 59 kDa

Observed band size: 59 kDa

Verified Activity:





Application: FCM,IF,IHC-Fr,IHC-P,WB

Recommended WB: 1:500-2000; IHC-P: 1:100-500; IHC-Fr: 1:100-500; IF: 1:100-500; FCM: 1µg/Test

Properties

Stability & Storage: Store at -20°C or -80°C for 12 months. Avoid repeated freeze-thaw cycles.

Shipping: Shipping with blue ice.

Antigen Details

Immunogen: KLH conjugated synthetic peptide: human PODXL

Antigen Species: Human

Gene ID: 5420

Uniprot ID: O00592

Biology Area: Tumor biomarkers,Endothelial Cell Markers,Endothelium,Focal Adhesions,Surface Molecules

Research Background

This gene encodes a member of the sialomucin protein family. The encoded protein was originally identified as an important component of glomerular podocytes. Podocytes are highly differentiated epithelial cells with interdigitating foot processes covering the outer aspect of the glomerular basement membrane. Other biological activities of the encoded protein include: binding in a membrane protein complex with Na⁺/H⁺ exchanger regulatory factor to intracellular cytoskeletal elements, playing a role in hematopoietic cell differentiation, and being expressed in vascular endothelium cells and binding to L-selectin. [provided by RefSeq, Jul 2008]

Inhibitor · Natural Compounds · Compound Libraries · Recombinant Proteins

This product is for Research Use Only · Not for Human or Veterinary or Therapeutic Use

Tel:781-999-4286 E_mail:info@targetmol.com Address:34 Washington Street,Wellesley Hills,MA 02481