

Anti-Podoplanin Polyclonal Antibody

Product Details

Ig Type: IgG
Reactivity: Mouse,Rat
Molecular Weight: Theoretical: 15 kDa. Actual: 37 kDa.
Purification: Protein A purified

Applications

1. Paraformaldehyde-fixed, paraffin embedded (rat brain tissue); Antigen retrieval by boiling in sodium citrate buffer (pH6.0) for 15 min; Block endogenous peroxidase by 3% hydrogen peroxide for 20 min; Blocking buffer (normal goat serum) at 37°C for 30 min; Antibody incubation with (Podoplanin) Polyclonal Antibody, Unconjugated (TMAB-01557) at 1:400 overnight at 4°C, followed by a conjugated secondary for 20 min and DAB staining.

Verified Activity:

2. Sample:

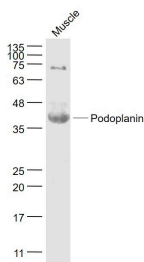
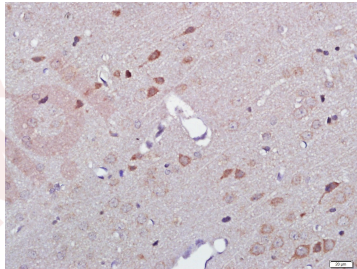
Muscle (Mouse) Lysate at 40 µg

Primary: Anti-Podoplanin (TMAB-01557) at 1/1000 dilution

Secondary: IRDye800CW Goat Anti-Rabbit IgG at 1/20000 dilution

Predicted band size: 15 kDa

Observed band size: 37 kDa



Application: IF,IHC-Fr,IHC-P,WB

Recommended WB: 1:500-2000; IHC-P: 1:100-500; IHC-Fr: 1:100-500; IF: 1:100-500

Properties

Stability & Storage: Store at -20°C or -80°C for 12 months. Avoid repeated freeze-thaw cycles.

Shipping: Shipping with blue ice.

Antigen Details

Immunogen: KLH conjugated synthetic peptide: mouse Podoplanin

Antigen Species: Mouse

Gene ID: 14726

Uniprot ID: Q62011

Synonyms: T11A;T1A-2;PA2.26;Gp38;OTS8;podoplanin;GP36;T1A;HT1A-1;AGGRUS;GP40;T1A2

Biology Area: Other Cell Types,Endothelium,Blood,Endothelial Cell Markers

Research Background

This gene encodes a type-I integral membrane glycoprotein with diverse distribution in human tissues. The physiological function of this protein may be related to its mucin-type character. The homologous protein in other species has been described as a differentiation antigen and influenza-virus receptor. The specific function of this protein has not been determined but it has been proposed as a marker of lung injury. Alternatively spliced transcript variants encoding different isoforms have been identified. [provided by RefSeq, Jul 2008]

Inhibitor · Natural Compounds · Compound Libraries · Recombinant Proteins

This product is for Research Use Only · Not for Human or Veterinary or Therapeutic Use

Tel:781-999-4286 E_mail:info@targetmol.com Address:34 Washington Street,Wellesley Hills,MA 02481