

Anti-PLA2R Polyclonal Antibody

Product Details

Ig Type: IgG
Reactivity: Human, Mouse (predicted: Cow, Rabbit)
Molecular Weight: Theoretical: 153 kDa. Actual: 153 kDa.
Purification: Protein A purified

Applications

1. Paraformaldehyde-fixed, paraffin embedded (Human kidney tissue); Antigen retrieval by boiling in sodium citrate buffer (pH6.0) for 15 min; Block endogenous peroxidase by 3% hydrogen peroxide for 20 min; Blocking buffer (normal goat serum) at 37°C for 30 min; Antibody incubation with (PLA2R) Polyclonal Antibody, Unconjugated (TMAB-01546) at 1:400 overnight at 4°C, followed by operating according to SP Kit (Rabbit) instructions and DAB staining.

Verified Activity:

2. Sample:

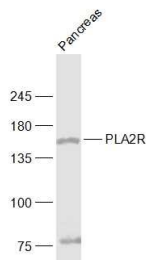
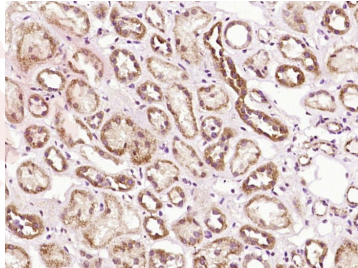
Pancreas (Mouse) Lysate at 40 µg

Primary: Anti-PLA2R (TMAB-01546) at 1/1000 dilution

Secondary: IRDye800CW Goat Anti-Rabbit IgG at 1/20000 dilution

Predicted band size: 153 kDa

Observed band size: 153 kDa



Application: IF, IHC-Fr, IHC-P, WB

Recommended WB: 1:500-2000; IHC-P: 1:100-500; IHC-Fr: 1:100-500; IF: 1:100-500

Properties

Stability & Storage: Store at -20°C or -80°C for 12 months. Avoid repeated freeze-thaw cycles.

Shipping: Shipping with blue ice.

Antigen Details

Immunogen: KLH conjugated synthetic peptide: human PLA2R

Antigen Species: Human

Gene ID: 22925

Synonyms: CLEC13C;PLA2R1;phospholipase A2 receptor 1;PLA2IR;PLA2R;M-type receptor;C-type lectin domain family 13 member C;PLA2 R;PLA2-R;180 kDa secretory phospholipase A2 receptor; PLA2G1R;M type receptor

Biology Area: Lipases,Lipases,Lipid metabolism

Research Background

This gene represents a phospholipase A2 receptor. The encoded protein likely exists as both a transmembrane form and a soluble form. The transmembrane receptor may play a role in clearance of phospholipase A2, thereby inhibiting its action. Polymorphisms at this locus have been associated with susceptibility to idiopathic membranous nephropathy. Alternatively spliced transcript variants encoding different isoforms have been identified.[provided by RefSeq, Sep 2010]

Inhibitor · Natural Compounds · Compound Libraries · Recombinant Proteins

This product is for Research Use Only · Not for Human or Veterinary or Therapeutic Use

Tel:781-999-4286 E_mail:info@targetmol.com Address:34 Washington Street,Wellesley Hills,MA 02481