

Anti-PKM2 Polyclonal Antibody 2

Product Details

Ig Type:	IgG
Reactivity:	Human,Rat (predicted:Mouse,Pig,Cow,Horse,Rabbit)
Molecular Weight:	Theoretical: 57 kDa. Actual: 61 kDa.
Purification:	Protein A purified

Applications

1. Tissue/cell: human rectal carcinoma;4% Paraformaldehyde-fixed and paraffin-embedded; Antigen retrieval: citrate buffer (0.01M, pH6.0), Boiling bathing for 15 min; Blocking buffer (normal goat serum) at 37°C for 20 min; Incubation: Anti-PKM2 Polyclonal Antibody, Unconjugated (TMAB-01545) 1:200, overnight at 4° C; The secondary antibody was Goat Anti-Rabbit IgG, FITC conjugated used at 1:200 dilution for 40 minutes at 37°C.

2. Tissue/cell: human lung cancer tissue; 4% Paraformaldehyde-fixed and paraffin-embedded; Antigen retrieval: citrate buffer (0.01M, pH6.0), Boiling bathing for 15 min; Block endogenous peroxidase by 3% Hydrogen peroxide for 30 min; Blocking buffer (normal goat serum) at 37°C for 20 min;

Incubation: Anti-PKM2 Polyclonal Antibody, Unconjugated (TMAB-01545) 1:200, overnight at 4° C, followed by conjugation to the secondary antibody and DAB staining.

3. Sample:

Lane 1: Testis (Rat) Lysate at 40 µg

Lane 2: Prostate (Rat) Lysate at 40 µg

Verified Activity: Lane 3: Kidney (Rat) Lysate at 40 µg

Primary: Anti-PKM2 (TMAB-01545) at 1/1000 dilution

Secondary: IRDye800CW Goat Anti-Rabbit IgG at 1/20000 dilution

Predicted band size: 60 kDa

Observed band size: 61 kDa

4. Blank control: A549. Primary Antibody (green line): Rabbit Anti-PKM2 antibody (TMAB-01545)

Dilution: 1 µg/10⁶ cells;

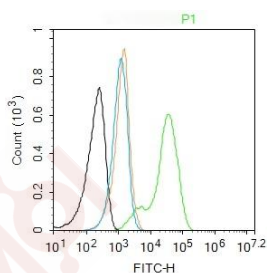
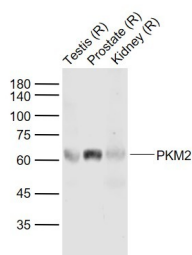
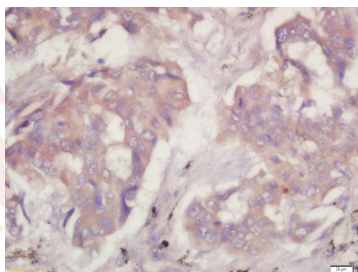
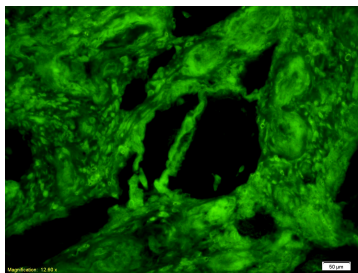
Isotype Control Antibody (orange line): Rabbit IgG.

Secondary Antibody: Goat anti-rabbit IgG-AF488

Dilution: 1 µg/test.

Protocol

The cells were fixed with 4% PFA (10 min at room temperature) and then permeabilized with 0.1% PBST for 20 min at room temperature. The cells were then incubated in 5% BSA to block non-specific protein-protein interactions for 30 min at room temperature. Cells stained with Primary Antibody for 30 min at room temperature. The secondary antibody used for 40 min at room temperature.



Application: FCM,IF,IHC-Fr,IHC-P,WB

Recommended WB: 1:500-2000; IHC-P: 1:100-500; IHC-Fr: 1:100-500; IF: 1:100-500; FCM: 1ug/Test

Properties

Stability & Storage: Store at -20°C or -80°C for 12 months. Avoid repeated freeze-thaw cycles.

Shipping: Shipping with blue ice.

Antigen Details

Immunogen: KLH conjugated synthetic peptide: human PKM2

Antigen Species: Human

Gene ID: 5315

Uniprot ID: P14618

Synonyms: TCB;pyruvate kinase, muscle;CTHBP;HEL-S-30;OIP3;PK3;THBP1;PKM2

Biology Area: Energy Metabolism,Energy Metabolism,Carbohydrate metabolism,Kinases/Phosphatases, Enzymes,Metabolism of carbohydrates

Research Background

The protein encoded by this gene is a pyruvate kinase that catalyzes the production of phosphoenolpyruvate from pyruvate and ATP. This protein has been shown to interact with thyroid hormone, and thus may mediate cellular metabolic effects induced by thyroid hormones. This protein has been found to bind Opa protein, a bacterial outer membrane protein involved in gonococcal adherence to and invasion of human cells, suggesting a role of this protein in bacterial pathogenesis. Three alternatively spliced transcript variants encoding two distinct isoforms have been reported.

Inhibitor · Natural Compounds · Compound Libraries · Recombinant Proteins

This product is for Research Use Only · Not for Human or Veterinary or Therapeutic Use

Tel:781-999-4286 E_mail:info@targetmol.com Address:34 Washington Street,Wellesley Hills,MA 02481