

Anti-PKM2 Polyclonal Antibody

Product Details

Ig Type:	IgG
Reactivity:	Human,Mouse,Rat (predicted:Pig,Cow,Horse,Rabbit)
Molecular Weight:	Theoretical: 58 kDa. Actual: 58 kDa.
Purification:	Protein A purified

Applications

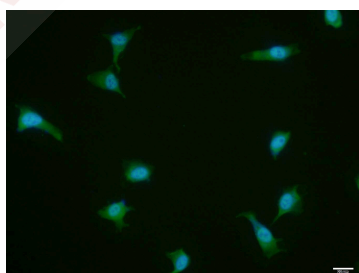
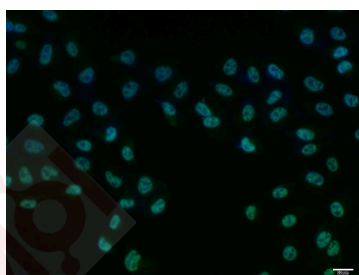
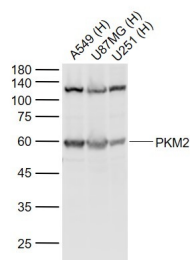
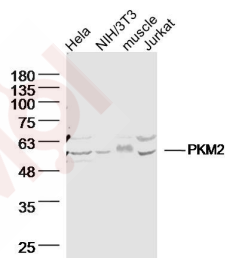
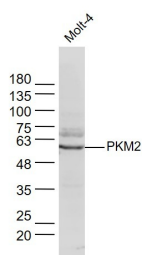
1. Sample:
MOLT-4 (Human) Cell Lysate at 30 µg
Primary: Anti-PKM2 (TMAB-01544) at 1/300 dilution
Secondary: IRDye800CW Goat Anti-Mouse IgG at 1/20000 dilution
Predicted band size: 58 kDa
Observed band size: 58 kDa

2. Sample:
Hela Cell (Human) Lysate at 40 µg
NIH/3T3 Cell (Mouse) Lysate at 40 µg
Muscle (Mouse) Lysate at 40 µg
Jurkat Cell (Human) Lysate at 40 µg
Primary: Anti-PKM2 (TMAB-01544) at 1/300 dilution
Secondary: IRDye800CW Goat Anti-Mouse IgG at 1/20000 dilution
Predicted band size: 58 kDa
Observed band size: 58 kDa

3. Sample:
Verified Activity: Lane 1: A549 (Human) Cell Lysate at 30 µg
Lane 2: U87MG (Human) Cell Lysate at 30 µg
Lane 3: U251 (Human) Cell Lysate at 30 µg
Primary: Anti-PKM2 (TMAB-01544) at 1/1000 dilution
Secondary: IRDye800CW Goat Anti-Mouse IgG at 1/20000 dilution
Predicted band size: 60 kDa
Observed band size: 60 kDa

4. Hela cell; 4% Paraformaldehyde-fixed; Triton X-100 at room temperature for 20 min; Blocking buffer (normal goat serum) at 37°C for 20 min; Antibody incubation with (PKM2) polyclonal Antibody, Unconjugated (TMAB-01544) 1:100, 90 minutes at 37°C; followed by a conjugated Goat Anti-Mouse IgG antibody at 37°C for 90 minutes, DAPI (blue) was used to stain the cell nucleus.

5. U-87MG cell; 4% Paraformaldehyde-fixed; Triton X-100 at room temperature for 20 min; Blocking buffer (normal goat serum) at 37°C for 20 min; Antibody incubation with (PKM2) polyclonal Antibody, Unconjugated (TMAB-01544) 1:100, 90 minutes at 37°C; followed by a conjugated Goat Anti-Mouse IgG antibody at 37°C for 90 minutes, DAPI (blue) was used to stain the cell nucleus.



Application: ICC/IF,IF,IHC-Fr,IHC-P,WB

Recommended ICC/IF=1:100-500; IF=1:100-500; IHC-Fr=1:100-500; IHC-P=1:100-500; WB=1:500-2000

Properties

Stability & Storage: Store at -20°C or -80°C for 12 months. Avoid repeated freeze-thaw cycles.

Shipping: Shipping with blue ice.

Antigen Details

Immunogen:	KLH conjugated synthetic peptide: human PKM2
Antigen Species:	Human
Gene ID:	5315
Uniprot ID:	P14618
Synonyms:	pyruvate kinase, muscle;TCB;OIP3;PK3;HEL-S-30;CTHBP;THBP1;PKM2
Biology Area:	Energy Metabolism,Energy Metabolism,Carbohydrate metabolism,Kinases/Phosphatases,Enzymes,Metabolism of carbohydrates

Research Background

The protein encoded by this gene is a pyruvate kinase that catalyzes the production of phosphoenolpyruvate from pyruvate and ATP. This protein has been shown to interact with thyroid hormone, and thus may mediate cellular metabolic effects induced by thyroid hormones. This protein has been found to bind Opa protein, a bacterial outer membrane protein involved in gonococcal adherence to and invasion of human cells, suggesting a role of this protein in bacterial pathogenesis. Three alternatively spliced transcript variants encoding two distinct isoforms have been reported.

Inhibitor · Natural Compounds · Compound Libraries · Recombinant Proteins

This product is for Research Use Only · Not for Human or Veterinary or Therapeutic Use

Tel:781-999-4286 E_mail:info@targetmol.com Address:34 Washington Street,Wellesley Hills,MA 02481