

## Anti-PINK1 Polyclonal Antibody

### Product Details

Ig Type: IgG  
Reactivity: Human, Mouse, Rat  
Molecular Weight: Theoretical: 64 kDa. Actual: 58 kDa.  
Purification: Protein A purified

### Applications

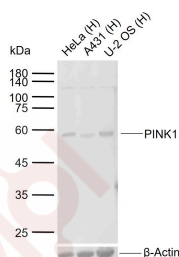
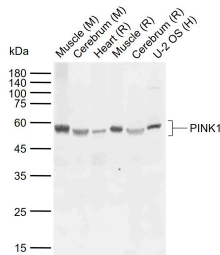
#### 1. Sample:

Lane 1: Mouse Muscle tissue lysates  
Lane 2: Mouse Cerebrum tissue lysates  
Lane 3: Rat Heart tissue lysates  
Lane 4: Rat Muscle tissue lysates  
Lane 5: Rat Cerebrum tissue lysates  
Lane 6: Human U-2 OS cell lysates  
Primary: Anti-PINK1 (TMAB-01542) at 1/500 dilution  
Secondary: IRDye800CW Goat Anti-Rabbit IgG at 1/20000 dilution

Verified Activity: Predicted band size: 64 kDa  
Observed band size: 58 kDa

#### 2. Sample:

Lane 1: Human HeLa cell lysates  
Lane 2: Human A431 cell lysates  
Lane 3: Human U-2OS cell lysates  
Primary: Anti-PINK1 (TMAB-01542) at 1/1000 dilution  
Secondary: IRDye800CW Goat Anti-Rabbit IgG at 1/20000 dilution  
Predicted band size: 64 kDa  
Observed band size: 60 kDa



Application: WB

Recommended WB: 1:500-2000

### Properties

Stability & Storage: Store at -20°C or -80°C for 12 months. Avoid repeated freeze-thaw cycles.

Shipping: Shipping with blue ice.

---

### Antigen Details

Immunogen: KLH conjugated synthetic peptide: human PINK1

Antigen Species: Human

Gene ID: 65018

Uniprot ID: Q9BXM7

Synonyms: EC 2.7.11.1;PTEN Induced Putative Kinase 1;Serine/Threonine-Protein Kinase PINK1, Mitochondrial;PINK 1;PTEN-Induced Putative Kinase Protein 1;Parkinson Disease(Autosomal Recessive) 6;PARK6;Protein Kinase BRPK;BRPK

Biology Area: Cardiac metabolism,Mitochondrial markers,Mitophagy fission and fusion,Neurodegenerative disease,Parkinson's disease,Mitochondrial,Other Kinases

---

### Research Background

This gene encodes a serine/threonine protein kinase that localizes to mitochondria. It is thought to protect cells from stress-induced mitochondrial dysfunction. Mutations in this gene cause one form of autosomal recessive early-onset Parkinson disease. [provided by RefSeq, Jul 2008]

**Inhibitor · Natural Compounds · Compound Libraries · Recombinant Proteins**

This product is for Research Use Only · Not for Human or Veterinary or Therapeutic Use

Tel:781-999-4286 E\_mail:info@targetmol.com Address:34 Washington Street,Wellesley Hills,MA 02481