

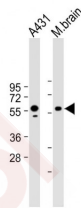
Anti-PINK1 Antibody (1K285)

Product Details

Ig Type:	IgG
Reactivity:	Human,Mouse
Molecular Weight:	Theoretical: 63 kDa.
Clone:	1K285
Purification:	Protein G purified

Applications

Verified Activity:	<p>All Lanes: Anti-Pink1 (115-213) at 1:4000 dilution Lane 1: A431 whole cell lysate Lane 2: Mouse brain lysate Lysates/proteins at 20 µg per Lane. Secondary: Goat Anti-mouse IgG, (H+L), Peroxidase conjugated at 1/10000 dilution. Predicted band size: 63 kDa Blocking/Dilution buffer: 5% NFD/MTBST.</p>
--------------------	---



Application:	ICC/IF,IF,IHC-Fr,IHC-P,WB
Recommended	ICC/IF=1:100-500; IF=1:100-500; IHC-Fr=1:100-500; IHC-P=1:100-500; WB=1:500-5000

Properties

Stability & Storage:	Store at -20°C or -80°C for 12 months. Avoid repeated freeze-thaw cycles.
Shipping:	Shipping with blue ice.

Antigen Details

Immunogen:	Recombinant Protein: human PINK1 protein
Antigen Species:	Human
Gene ID:	65018
Uniprot ID:	Q9BXM7
Synonyms:	Parkinson Disease(Autosomal Recessive) 6;PTEN Induced Putative Kinase 1;PARK6; Serine/Threonine-Protein Kinase PINK1, Mitochondrial;Protein Kinase BRPK;EC 2.7.11.1;BRPK; PINK 1;PTEN-Induced Putative Kinase Protein 1
Biology Area:	Cardiac metabolism,Mitochondrial markers,Mitophagy fission and fusion,Neurodegenerative disease,Parkinson's disease,Mitochondrial,Other Kinases

Research Background

This gene encodes a serine/threonine protein kinase that localizes to mitochondria. It is thought to protect cells from stress-induced mitochondrial dysfunction. Mutations in this gene cause one form of autosomal recessive early-onset Parkinson disease. [provided by RefSeq, Jul 2008]

Inhibitor · Natural Compounds · Compound Libraries · Recombinant Proteins

This product is for Research Use Only· Not for Human or Veterinary or Therapeutic Use

Tel:781-999-4286 E_mail:info@targetmol.com Address:34 Washington Street,Wellesley Hills,MA 02481