

Anti-PI3K β Polyclonal Antibody

Product Details

Ig Type:	IgG
Reactivity:	Human,Mouse,Rat
Molecular Weight:	Theoretical: 123 kDa. Actual: 110 kDa.
Purification:	Protein A purified

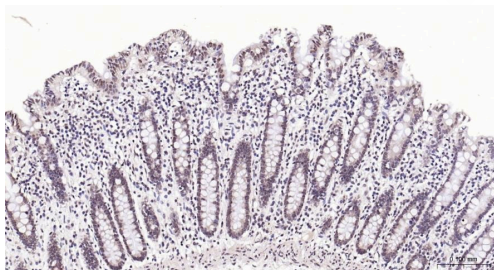
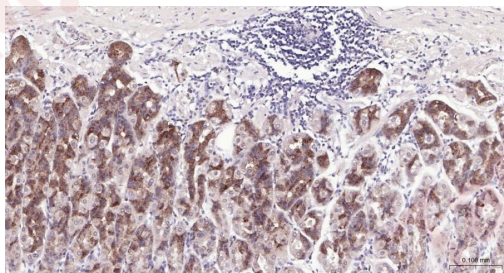
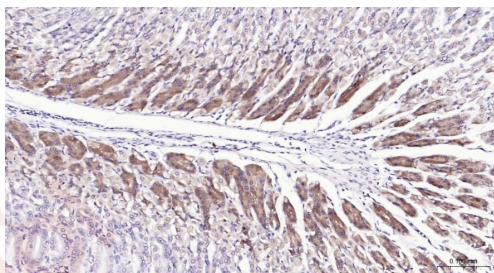
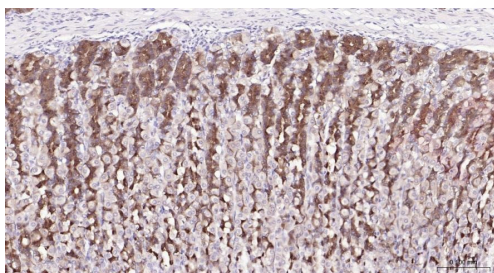
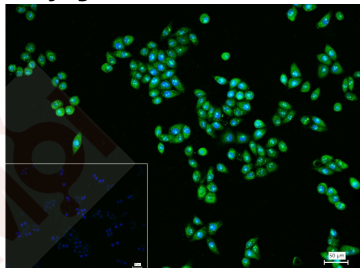
Applications

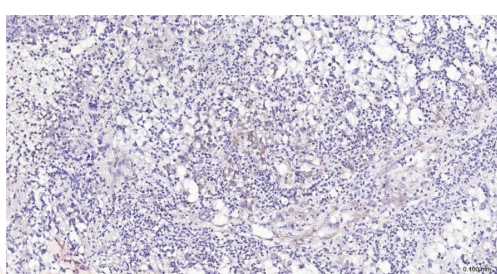
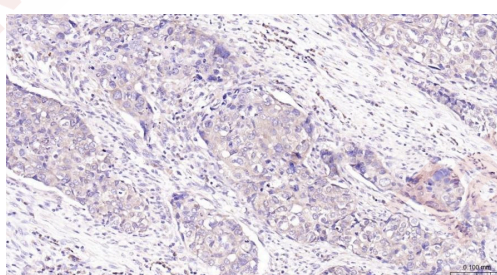
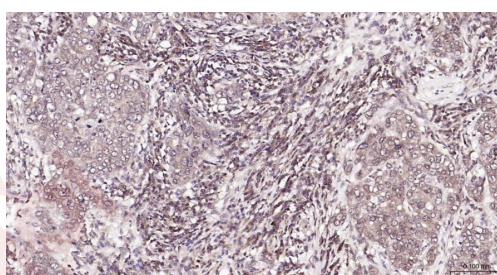
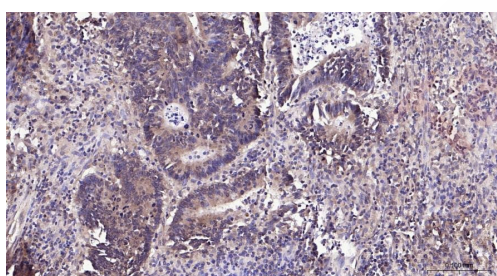
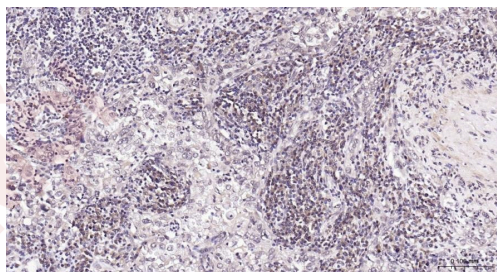
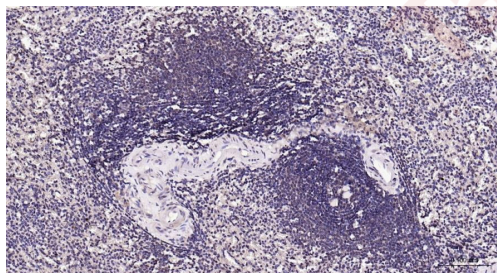
Verified Activity:

1. 4% Paraformaldehyde-fixed MCF-7 (H) cell; Triton X-100 at RT for 20 min; Antibody incubation with (PI3-kinase p110 subunit beta) polyclonal Antibody, unconjugated (TMAB-01535) 1:200, 90 min at 37°C; followed by conjugated Goat Anti-Rabbit IgG antibody (green) at 37°C for 90 min, DAPI (blue) was used to stain the cell nucleus. PBS instead of the primary antibody was used as the blank control.
2. Paraformaldehyde-fixed, paraffin embedded Rat Stomach; Antigen retrieval by boiling in sodium citrate buffer (pH6.0) for 15 min; Antibody incubation with PI3 Kinase p110 beta Polyclonal Antibody, Unconjugated (TMAB-01535) at 1:100 overnight at 4°C, followed by conjugation to the secondary antibody and DAB staining.
3. Paraformaldehyde-fixed, paraffin embedded Mouse Stomach; Antigen retrieval by boiling in sodium citrate buffer (pH6.0) for 15 min; Antibody incubation with PI3 Kinase p110 beta Polyclonal Antibody, Unconjugated (TMAB-01535) at 1:100 overnight at 4°C, followed by conjugation to the secondary antibody and DAB staining.
4. Paraformaldehyde-fixed, paraffin embedded Human Fundus; Antigen retrieval by boiling in sodium citrate buffer (pH6.0) for 15 min; Antibody incubation with PI3 Kinase p110 beta Polyclonal Antibody, Unconjugated (TMAB-01535) at 1:100 overnight at 4°C, followed by conjugation to the secondary antibody and DAB staining.
5. Paraformaldehyde-fixed, paraffin embedded Human Colon; Antigen retrieval by boiling in sodium citrate buffer (pH6.0) for 15 min; Antibody incubation with PI3 Kinase p110 beta Polyclonal Antibody, Unconjugated (TMAB-01535) at 1:100 overnight at 4°C, followed by conjugation to the secondary antibody and DAB staining.
6. Paraformaldehyde-fixed, paraffin embedded Human Spleen; Antigen retrieval by boiling in sodium citrate buffer (pH6.0) for 15 min; Antibody incubation with PI3 Kinase p110 beta Polyclonal Antibody, Unconjugated (TMAB-01535) at 1:100 overnight at 4°C, followed by conjugation to the secondary antibody and DAB staining.
7. Paraformaldehyde-fixed, paraffin embedded Human Cervical Cancer; Antigen retrieval by boiling in sodium citrate buffer (pH6.0) for 15 min; Antibody incubation with PI3 Kinase p110 beta Polyclonal Antibody, Unconjugated (TMAB-01535) at 1:100 overnight at 4°C, followed by conjugation to the secondary antibody and DAB staining.
8. Paraformaldehyde-fixed, paraffin embedded Human Colon Cancer; Antigen retrieval by boiling in sodium citrate buffer (pH6.0) for 15 min; Antibody incubation with PI3 Kinase p110 beta Polyclonal Antibody, Unconjugated (TMAB-01535) at 1:100 overnight at 4°C, followed by conjugation to the secondary antibody and DAB staining.
9. Paraformaldehyde-fixed, paraffin embedded Human Breast Cancer; Antigen retrieval by boiling in sodium citrate buffer (pH6.0) for 15 min; Antibody incubation with PI3 Kinase p110 beta Polyclonal Antibody, Unconjugated (TMAB-01535) at 1:100 overnight at 4°C, followed by conjugation to the secondary antibody and DAB staining.
10. Paraformaldehyde-fixed, paraffin embedded Human Esophagus Cancer; Antigen retrieval

by boiling in sodium citrate buffer (pH6.0) for 15 min; Antibody incubation with PI3 Kinase p110 beta Polyclonal Antibody, Unconjugated (TMAB-01535) at 1:100 overnight at 4°C, followed by conjugation to the secondary antibody and DAB staining.

11. Paraformaldehyde-fixed, paraffin embedded Human Endometrial Cancer; Antigen retrieval by boiling in sodium citrate buffer (pH6.0) for 15 min; Antibody incubation with PI3 Kinase p110 beta Polyclonal Antibody, Unconjugated (TMAB-01535) at 1:100 overnight at 4°C, followed by conjugation to the secondary antibody and DAB staining.





Application: ICC/IF,IF,IHC-Fr,IHC-P,WB

Recommended ICC/IF=1:50-200; IF=1:100-500; IHC-Fr=1:100-500; IHC-P=1:100-500; WB=1:500-1000

Properties

Stability & Storage: Store at -20°C or -80°C for 12 months. Avoid repeated freeze-thaw cycles.

Shipping: Shipping with blue ice.

Antigen Details

Immunogen: KLH conjugated synthetic peptide: human PI3 Kinase p110 beta

Antigen Species: Human

Gene ID: 5291

Uniprot ID: P42338

Synonyms: p110 BETA;PI3 kinase p110 subunit beta;PtdIns-3-kinase subunit beta;Phosphatidylinositol-4;PI3-kinase subunit beta;Phosphatidylinositol 4 5 bisphosphate 3 kinase catalytic subunit beta isoform;PI3K;PI3Kbeta;5-bisphosphate 3-kinase 110 kDa catalytic subunit beta;PK3CB;5-bisphosphate 3-kinase catalytic subunit beta isoform;PI3K beta;Pik3cb;PtdIns-3-kinase subunit p110-beta;Phosphatidylinositol 4 5 bisphosphate 3 kinase 110 kDa catalytic subunit beta;PIK3C1;PI3KCB;PI3 Kinase p110 beta;phosphoinositide 3 kinase catalytic beta polypeptide;Phosphatidylinositol 3 kinase catalytic beta polypeptide;PtdIns 3 kinase p110;p110beta;PI3-kinase p110 subunit beta

Biology Area: Kinases/Phosphatases,TLR Signaling,Other Kinases,Lipid Kinases

Research Background

This gene encodes an isoform of the catalytic subunit of phosphoinositide 3-kinase (PI3K). These kinases are important in signaling pathways involving receptors on the outer membrane of eukaryotic cells and are named for their catalytic subunit. The encoded protein is the catalytic subunit for PI3Kbeta (PI3KB). PI3KB has been shown to be part of the activation pathway in neutrophils which have bound immune complexes at sites of injury or infection. Alternative splicing results in multiple transcript variants. [provided by RefSeq, Dec 2011].

Inhibitor · Natural Compounds · Compound Libraries · Recombinant Proteins

This product is for Research Use Only · Not for Human or Veterinary or Therapeutic Use

Tel:781-999-4286 E_mail:info@targetmol.com Address:34 Washington Street,Wellesley Hills,MA 02481