

Anti-Phospho-YES1 (Tyr426) Polyclonal Antibody

Product Details

Ig Type:	IgG
Reactivity:	Mouse,Rat (predicted:Human,Chicken,Dog,Pig,Cow,Rabbit,GuineaPig)
Molecular Weight:	Theoretical: 60 kDa. Actual: 60 kDa.
Purification:	Protein A purified

Applications

1. Sample:

Embryo (Mouse) Lysate at 40 μ g

Lung (Mouse) Lysate at 40 μ g

BV2 (Human) Cell Lysate at 30 μ g

Primary: Anti-phospho-YES1 (Tyr426) (TMAB-01533) at 1/300 dilution

Secondary: IRDye800CW Goat Anti-Rabbit IgG at 1/20000 dilution

Predicted band size: 60 kDa

Verified Activity: Observed band size: 65 kDa

2. Sample:

Lane 1: Mouse Raw264.7 cell lysates

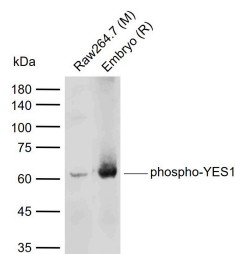
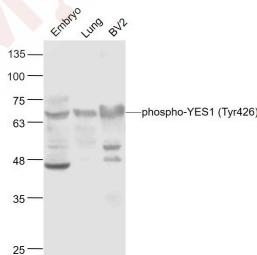
Lane 2: Rat Embryo tissue lysates

Primary: Anti-phospho-YES1 (Tyr426) (TMAB-01533) at 1/1000 dilution

Secondary: IRDye800CW Goat Anti-Rabbit IgG at 1/20000 dilution

Predicted band size: 60 kDa

Observed band size: 60 kDa



Application: WB

Recommended WB: 1:500-2000

Properties

Stability & Storage: Store at -20°C or -80°C for 12 months. Avoid repeated freeze-thaw cycles.

Shipping: Shipping with blue ice.

Antigen Details

Immunogen: KLH conjugated Synthesised phosphopeptide: human YES1 around the phosphorylation site of Tyr426

Antigen Species: Human

Gene ID: 7525

Uniprot ID: P07947

Synonyms: p-YES1 (Y426);p-YES1 (Tyr426);YES proto-oncogene 1, Src family tyrosine kinase;HsT441;c-yes;Yes;YES1 (p-Y426);P61-YES;YES1 (p-Tyr426)

Biology Area: Signal transducers,Proto-oncogenes,Src Family

Research Background

This gene is the cellular homolog of the Yamaguchi sarcoma virus oncogene. The encoded protein has tyrosine kinase activity and belongs to the src family of proteins. This gene lies in close proximity to thymidylate synthase gene on chromosome 18, and a corresponding pseudogene has been found on chromosome 22. [provided by RefSeq].

Inhibitor · Natural Compounds · Compound Libraries · Recombinant Proteins

This product is for Research Use Only · Not for Human or Veterinary or Therapeutic Use

Tel:781-999-4286 E_mail:info@targetmol.com Address:34 Washington Street,Wellesley Hills,MA 02481
