

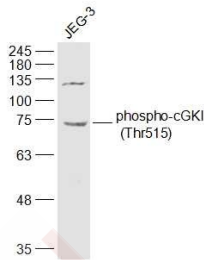
Anti-Phospho-PRKG1 (Thr515) Polyclonal Antibody

Product Details

Ig Type:	IgG
Reactivity:	Human (predicted:Mouse,Rat)
Molecular Weight:	Theoretical: 74 kDa. Actual: 74 kDa.
Purification:	Protein A purified

Applications

Verified Activity:	Sample:
	JEG-3 (Human) Cell Lysate at 30 µg
	Primary: Anti-phospho-cGKI (Thr515) (TMAB-01486) at 1/1000 dilution
	Secondary: IRDye800CW Goat Anti-Rabbit IgG at 1/20000 dilution
	Predicted band size: 74 kDa
	Observed band size: 74 kDa



Application:	WB
Recommended	WB: 1:500-2000

Properties

Stability & Storage:	Store at -20°C or -80°C for 12 months. Avoid repeated freeze-thaw cycles.
Shipping:	Shipping with blue ice.

Antigen Details

Immunogen:	KLH conjugated Synthesised phosphopeptide: human cGKI around the phosphorylation site of Thr515
Antigen Species:	Human
Gene ID:	5592
Uniprot ID:	Q13976
Synonyms:	PRKG1B;cGK1;PRKG1 (p-T515);cGK 1;cGKI;cGMP-Dependent Protein Kinase 1;PRKG1;cGMP-Dependent Protein Kinase I;p-PRKG1 (T515);PRKG1 (p-Thr515);PRKGR1A;p-PRKG1 (Thr515);PRKGR1B
Biology Area:	Platelets,Hypertrophy,Other Kinases

Research Background

Protein kinases are enzymes that transfer a phosphate group from a phosphate donor, generally the γ phosphate of

A DRUG SCREENING EXPERT

ATP, onto an acceptor amino acid in a substrate protein. By this basic mechanism, protein kinases mediate most of the signal transduction in eukaryotic cells, regulating cellular metabolism, transcription, cell cycle progression, cytoskeletal rearrangement and cell movement, apoptosis, and differentiation. With more than 500 gene products, the protein kinase family is one of the largest families of proteins in eukaryotes. The family has been classified in 8 major groups based on sequence comparison of their tyrosine (PTK) or serine/threonine (STK) kinase catalytic domains. PKG plays an important stimulatory role in platelet activation.

Inhibitor · Natural Compounds · Compound Libraries · Recombinant Proteins

This product is for Research Use Only · Not for Human or Veterinary or Therapeutic Use

Tel:781-999-4286 E_mail:info@targetmol.com Address:34 Washington Street,Wellesley Hills,MA 02481