

Anti-Phospho-p53 (Ser15) Polyclonal Antibody

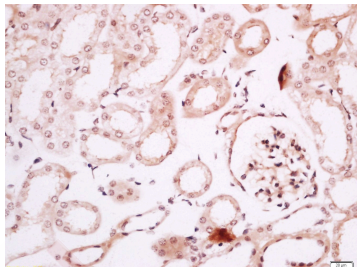
Product Details

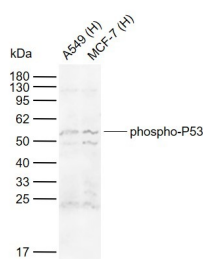
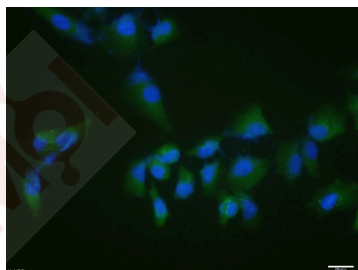
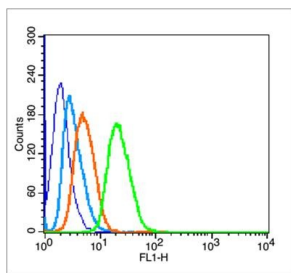
Ig Type:	IgG
Reactivity:	Human, Mouse (predicted: Dog, Pig, Cow, Rabbit, Sheep, Guinea Pig)
Molecular Weight:	Theoretical: 43 kDa. Actual: 53 kDa.
Purification:	Protein A purified

Applications

Verified Activity:

1. Tissue/cell: Mouse kidney tissue; 4% Paraformaldehyde-fixed and paraffin-embedded; Antigen retrieval: citrate buffer (0.01M, pH6.0), Boiling bathing for 15 min; Block endogenous peroxidase by 3% Hydrogen peroxide for 30 min; Blocking buffer (normal goat serum) at 37°C for 20 min; Incubation: Anti-p53 Polyclonal Antibody, Unconjugated (TMAB-01475) 1:200, overnight at 4°C, followed by conjugation to the secondary antibody and DAb staining.
2. Blank control (blue line): MCF 7 (fixed with 70% ethanol (Overnight at 4°C) and then permeabilized with 90% ice-cold methanol for 30 min on ice).
Primary Antibody (green line): Rabbit Anti-phospho-P53 (Ser15) antibody (TMAB-01475), Dilution: 1 µg/10⁶ cells;
Isotype Control Antibody (orange line): Rabbit IgG.
Secondary Antibody (white blue line): Goat anti-rabbit IgG-FITC, Dilution: 1 µg/test.
3. A549 cell; 4% Paraformaldehyde-fixed; Triton X-100 at room temperature for 20 min; Blocking buffer (normal goat serum) at 37°C for 20 min; Antibody incubation with (phospho-P53 (Ser15)) polyclonal Antibody, Unconjugated (TMAB-01475) 1:100, 90 minutes at 37°C; followed by a conjugated Goat Anti-Rabbit IgG antibody at 37°C for 90 minutes, DAPI (blue) was used to stain the cell nucleus.
4. Sample:
Lane 1: Human A549 cell lysates
Lane 2: Human MCF-7 cell lysates
Primary: Anti-phospho-P53 (Ser15) (TMAB-01475) at 1/1000 dilution
Secondary: IRDye800CW Goat Anti-Rabbit IgG at 1/20000 dilution
Predicted band size: 43 kDa
Observed band size: 53 kDa





Application: FCM, ICC/IF, IHC-Fr, IHC-P, WB

Recommended: FCM=1 µg/Test; ICC/IF=1:100-500; IF=1:100-500; IHC-Fr=1:100-500; IHC-P=1:100-500; WB=1:500-2000

Properties

Stability & Storage: Store at -20°C or -80°C for 12 months. Avoid repeated freeze-thaw cycles.

Shipping: Shipping with blue ice.

Antigen Details

Immunogen: KLH conjugated Synthesised phosphopeptide: human P53 around the phosphorylation site of Ser15

Antigen Species: Human

Gene ID: 7157

Uniprot ID: P04637

Synonyms: BMFS5; p53 (p-Ser15); p53 (p-S15); Phospho-p53 (S15); p-p53 (Ser15); TRP53; P-53; BCC7; LFS1; p-p53 (S15)

Biology Area: p53 pathway, p53 pathway, p53 Pathway, p53, p53, p53, Tumor Suppressors

Research Background

This gene encodes a tumor suppressor protein containing transcriptional activation, DNA binding, and oligomerization domains. The encoded protein responds to diverse cellular stresses to regulate expression of target genes, thereby inducing cell cycle arrest, apoptosis, senescence, DNA repair, or changes in metabolism. Mutations in this gene are associated with a variety of human cancers, including hereditary cancers such as Li-Fraumeni syndrome. Alternative splicing of this gene and the use of alternate promoters result in multiple transcript variants and isoforms. Additional isoforms have also been shown to result from the use of alternate translation initiation codons (PMIDs: 12032546, 20937277). [provided by RefSeq, Feb 2013].

Inhibitor · Natural Compounds · Compound Libraries · Recombinant Proteins

This product is for Research Use Only · Not for Human or Veterinary or Therapeutic Use

Tel:781-999-4286 E_mail:info@targetmol.com Address:34 Washington Street,Wellesley Hills,MA 02481