

Anti-Phospho-NFE2L2 (Ser40) Polyclonal Antibody

Product Details

Ig Type: IgG
Reactivity: Human
Molecular Weight: Theoretical: 68 kDa. Actual: 100 kDa.
Purification: Protein A purified

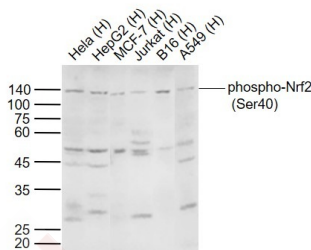
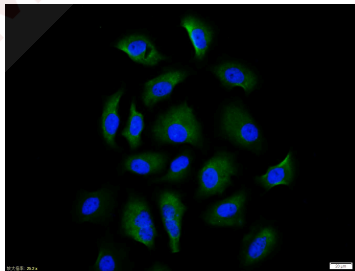
Applications

1. HepG2 cell; 4% Paraformaldehyde-fixed; Triton X-100 at room temperature for 20 min; Blocking buffer (normal goat serum) at 37°C for 20 min; Antibody incubation with (phospho-Nrf2 (Ser40)) polyclonal Antibody, Unconjugated (TMAB-01462) 1:100, 90 minutes at 37°C; followed by a conjugated Goat Anti-Rabbit IgG antibody at 37°C for 90 minutes, DAPI (blue) was used to stain the cell nucleus.

2. Sample:

Verified Activity:

Lane 1: HeLa (Human) Cell Lysate at 30 µg
Lane 2: HepG2 (Human) Cell Lysate at 30 µg
Lane 3: MCF-7 (Human) Cell Lysate at 30 µg
Lane 4: Jurkat (Human) Cell Lysate at 30 µg
Lane 5: B16 (Human) Cell Lysate at 30 µg
Lane 6: A549 (Human) Cell Lysate at 30 µg
Primary: Anti-phospho-Nrf2 (Ser40) (TMAB-01462) at 1/1000 dilution
Secondary: IRDye800CW Goat Anti-Rabbit IgG at 1/20000 dilution
Predicted band size: 68 kDa
Observed band size: 135 kDa



Application: WB,IHC-P,ICC/IF,FCM,IHC-F,IF

Recommended WB=1:500-2000,IHC-P=1:100-500,ICC/IF=1:100-500,FCM=1µg/Test,IHC-F=1:100-500,IF=1:100-500

Properties

Stability & Storage: Store at -20°C or -80°C for 12 months. Avoid repeated freeze-thaw cycles.

Shipping: Shipping with blue ice.

Antigen Details

Immunogen: KLH conjugated Synthesised phosphopeptide: human Nrf2 around the phosphorylation site of Ser40

Antigen Species: Human

Gene ID: 4780

Uniprot ID: Q16236

Synonyms: p-NFE2L2 (Ser40);NFE2L2 (p-S40);Phospho-NFE2L2 (S40);NFE2L2 (p-Ser40);p-NFE2L2 (S40)

Biology Area: Cardiac metabolism,Oxidative Stress,ChIP antibodies,Other factors,Mitochondrial transcription, Mitochondrial Biogenesis,Oxidative stress

Research Background

Nuclear factor erythroid 2-related factor 2 (Nrf2) is a transcription factor which regulates the expression of many detoxification and antioxidant enzymes. Nrf2 can potentially play a significant role in adaptive responses to oxidative stress. Nrf2 belongs to the Cap N Collar (CNC-bZIP) subfamily of basic /leucine zipper (bZIP) transcription factors.

Inhibitor · Natural Compounds · Compound Libraries · Recombinant Proteins

This product is for Research Use Only· Not for Human or Veterinary or Therapeutic Use

Tel:781-999-4286 E_mail:info@targetmol.com Address:34 Washington Street,Wellesley Hills,MA 02481