

## Anti-Phospho-NFAT2 (Ser233) Polyclonal Antibody

### Product Details

Ig Type:	IgG
Reactivity:	Human,Rat (predicted:Mouse,Pig,Cow,Sheep)
Molecular Weight:	Theoretical: 101 kDa. Actual: 101 kDa.
Purification:	Protein A purified

### Applications

#### 1. Sample:

K562 (Human) Cell Lysate at 30  $\mu$ g

Primary: Anti-phospho-NFAT2 (Ser233) (Ser235 mouse)(TMAB-01461) at 1/300 dilution

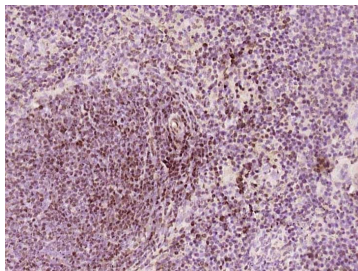
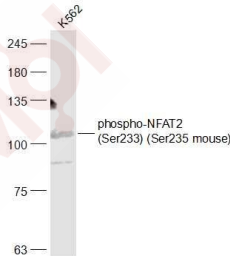
Secondary: IRDye800CW Goat Anti-Rabbit IgG at 1/20000 dilution

Predicted band size: 101 kDa

Observed band size: 101 kDa

#### Verified Activity:

2. Paraformaldehyde-fixed, paraffin embedded (Rat spleen); Antigen retrieval by boiling in sodium citrate buffer (pH6.0) for 15 min; Block endogenous peroxidase by 3% hydrogen peroxide for 20 min; Blocking buffer (normal goat serum) at 37°C for 30 min; Antibody incubation with (phospho-NFAT2 (Ser233) (Ser235 mouse)) Polyclonal Antibody, Unconjugated (TMAB-01461) at 1:400 overnight at 4°C, followed by operating according to SP Kit (Rabbit) instructions and DAB staining.



Application: IF,IHC-Fr,IHC-P,WB

Recommended WB: 1:500-2000; IHC-P: 1:100-500; IHC-Fr: 1:100-500; IF: 1:100-500

### Properties

Stability & Storage: Store at -20°C or -80°C for 12 months. Avoid repeated freeze-thaw cycles.

Shipping: Shipping with blue ice.

---

### Antigen Details

Immunogen: KLH conjugated synthesised phosphopeptide: human NFAT2 around the phosphorylation site of Ser233

Antigen Species: Human

Gene ID: 4772

Uniprot ID: O95644

Synonyms: MGC138448;NFAC1;Nuclear factor of activated T cells cytoplasmic 1;NFATc;p-NFAT2 (Ser233);p-NFAT2 (S233);NFAT transcription complex cytosolic component;Nuclear factor of activated T cells cytosolic component 1;NFAT 2;NF ATc;NF ATc1;NFAT2 (p-S233);NFATc1;Nuclear factor of activated T cells cytoplasmic calcineurin dependent 1;NFAT2 (p-Ser233);NFATC 1;NFAT2

Biology Area: Transcription factors/regulators,NFATs,Other factors,Non-CD,NFATS

---

### Research Background

The product of this gene is a component of the nuclear factor of activated T cells DNA-binding transcription complex. This complex consists of at least two components: a preexisting cytosolic component that translocates to the nucleus upon T cell receptor (TCR) stimulation, and an inducible nuclear component. Proteins belonging to this family of transcription factors play a central role in inducible gene transcription during immune response. The product of this gene is an inducible nuclear component. It functions as a major molecular target for the immunosuppressive drugs such as cyclosporin A. Multiple alternatively spliced transcript variants encoding distinct isoforms have been identified for this gene. Different isoforms of this protein may regulate inducible expression of different cytokine genes. [provided by RefSeq, Jul 2013]

**Inhibitor · Natural Compounds · Compound Libraries · Recombinant Proteins**

This product is for Research Use Only · Not for Human or Veterinary or Therapeutic Use

Tel:781-999-4286 E\_mail:info@targetmol.com Address:34 Washington Street,Wellesley Hills,MA 02481