

Anti-Phospho-MYL9 (Ser20) Polyclonal Antibody

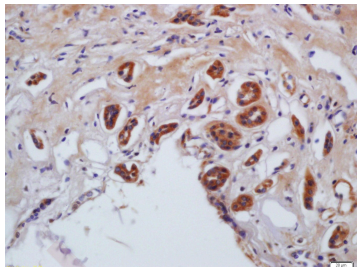
Product Details

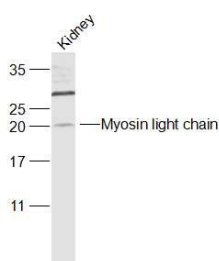
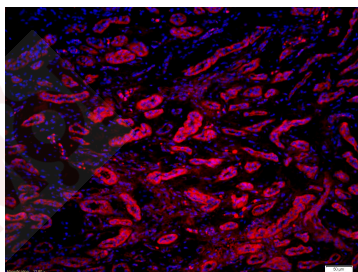
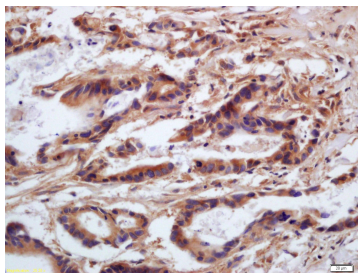
| | |
|-------------------|---|
| Ig Type: | IgG |
| Reactivity: | Human, Mouse (predicted: Rat, Dog, Pig, Cow, Rabbit, Sheep) |
| Molecular Weight: | Theoretical: 20 kDa. Actual: 20 kDa. |
| Purification: | Protein A purified |

Applications

Verified Activity:

1. Tissue/cell: human kidney tissue; 4% Paraformaldehyde-fixed and paraffin-embedded; Antigen retrieval: citrate buffer (0.01M, pH6.0), Boiling bathing for 15 min; Block endogenous peroxidase by 3% Hydrogen peroxide for 30 min; Blocking buffer (normal goat serum) at 37°C for 20 min; Incubation: Anti-phospho-MLc (Ser20) Polyclonal Antibody, Unconjugated (TMAB-01460) 1:200, overnight at 4°C, followed by conjugation to the secondary antibody and DAb staining.
2. Tissue/cell: human gastric carcinoma; 4% Paraformaldehyde-fixed and paraffin-embedded; Antigen retrieval: citrate buffer (0.01M, pH6.0), Boiling bathing for 15 min; Block endogenous peroxidase by 3% Hydrogen peroxide for 30 min; Blocking buffer (normal goat serum) at 37°C for 20 min; Incubation: Anti-phospho-MLc (Ser20) Polyclonal Antibody, Unconjugated (TMAB-01460) 1:200, overnight at 4°C, followed by conjugation to the secondary antibody and DAb staining.
3. Tissue/cell: human kidney tissue; 4% Paraformaldehyde-fixed and paraffin-embedded; Antigen retrieval: citrate buffer (0.01M, pH6.0), Boiling bathing for 15 min; Blocking buffer (normal goat serum) at 37°C for 20 min; Incubation: Anti-phospho-MLc (Ser20) Polyclonal Antibody, Unconjugated (TMAB-01460) 1:200, overnight at 4°C; The secondary antibody was Goat Anti-Rabbit IgG, Cy3 conjugated used at 1:200 dilution for 40 minutes at 37°C. DAPI (5 µg/ml, blue) was used to stain the cell nucleus.
4. Sample:
Kidney (Mouse) Lysate at 40 µg
Primary: Anti-Myosin light chain (phospho S20) (TMAB-01460) at 1/1000 dilution
Secondary: IRDye800CW Goat Anti-Rabbit IgG at 1/20000 dilution
Predicted band size: 20 kDa
Observed band size: 20 kDa





Application: IF,IHC-Fr,IHC-P,WB

Recommended WB: 1:500-2000; IHC-P: 1:100-500; IHC-Fr: 1:100-500; IF: 1:100-500

Properties

Stability & Storage: Store at -20°C or -80°C for 12 months. Avoid repeated freeze-thaw cycles.

Shipping: Shipping with blue ice.

Antigen Details

Immunogen: KLH conjugated synthesised phosphopeptide: human MYL9 around the phosphorylation site of Ser20

Antigen Species: Human

Gene ID: 10398

Uniprot ID: P24844

Synonyms: Myosin regulatory light chain 9;Myosin regulatory light polypeptide 9;MYL9;p-MYL9 (Ser20); Myosin regulatory light chain MRLC1;MYL9 (p-Ser20);MYL9 (p-S20);MRLC1;Myosin regulatory light chain 2, smooth muscle isoform;MYRL2;20 kDa myosin light chain (LC20);MLC2;MLC-2C;p-MYL9 (S20);Myosin RLC

Biology Area: Cytoskeleton,Signal Transduction,Motor Proteins,Myosin,ECM

Research Background

Myosin, a structural component of muscle, consists of two heavy chains and four light chains. The protein encoded by this gene is a myosin light chain that may regulate muscle contraction by modulating the ATPase activity of myosin heads. The encoded protein binds calcium and is activated by myosin light chain kinase. Two transcript variants encoding different isoforms have been found for this gene. [provided by RefSeq, Jul 2008]

Inhibitor · Natural Compounds · Compound Libraries · Recombinant Proteins

This product is for Research Use Only · Not for Human or Veterinary or Therapeutic Use

Tel:781-999-4286 E_mail:info@targetmol.com Address:34 Washington Street,Wellesley Hills,MA 02481