

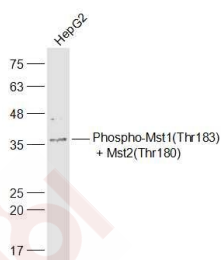
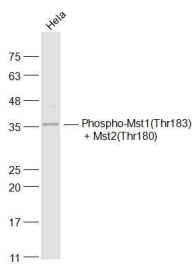
Anti-Phospho-MST1 /2 (Thr183, 180) Polyclonal Antibody

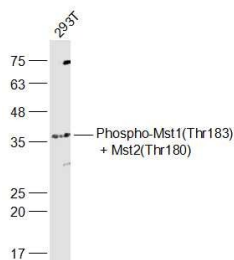
Product Details

Ig Type:	IgG
Reactivity:	Human (predicted:Mouse,Rat,Chicken,Dog,Cow,Horse,Rabbit)
Molecular Weight:	Theoretical: 19/37/56 kDa. Actual: 37 kDa.
Purification:	Protein A purified

Applications

Verified Activity:	1. Sample:
	Hela (Human) Cell Lysate at 30 µg
	Primary: Anti-Phospho-Mst1 (Thr183) + Mst2 (Thr180) (TMAB-01457) at 1/1000 dilution
	Secondary: IRDye800CW Goat Anti-Rabbit IgG at 1/20000 dilution
	Predicted band size: 19/37/56 kDa
	Observed band size: 37 kDa
	2. Sample:
	HepG2 (Human) Cell Lysate at 30 µg
	Primary: Anti-Phospho-Mst1 (Thr183) + Mst2 (Thr180) (TMAB-01457) at 1/1000 dilution
Secondary: IRDye800CW Goat Anti-Rabbit IgG at 1/20000 dilution	
Predicted band size: 19/37/56 kDa	
Observed band size: 37 kDa	
3. Sample:	
293t (Human) Cell Lysate at 30 µg	
Primary: Anti-Phospho-Mst1 (Thr183) + Mst2 (Thr180) (TMAB-01457) at 1/1000 dilution	
Secondary: IRDye800CW Goat Anti-Rabbit IgG at 1/20000 dilution	
Predicted band size: 19/37/56 kDa	
Observed band size: 37 kDa	





Application: WB

Recommended WB: 1:500-2000

Properties

Stability & Storage: Store at -20°C or -80°C for 12 months. Avoid repeated freeze-thaw cycles.

Shipping: Shipping with blue ice.

Antigen Details

Immunogen: KLH conjugated Synthesised phosphopeptide: human Mst1 around the phosphorylation site of Thr183

Antigen Species: Human

Gene ID: 6789

Uniprot ID: Q13043

Synonyms: Serine/threonine-protein kinase 4 37kDa subunit;STE20-like kinase MST1;Krs2;TIAC; Mammalian STE20 like protein kinase 1;Kinase responsive to stress;Serine/threonine kinase 4; STE20 like kinase MST1;Serine/threonine-protein kinase 4;Mammalian sterile 20 like 1;MST1 /2 (p-T183, 180);YSK3;MST1/N;p-MST1 /2 (Thr183, 180);STK 4;MST1 /2 (p-Thr183, 180);MST-1; STK4;Serine/threonine protein kinase Krs 2;Serine/threonine-protein kinase 4 18kDa subunit; MST1/C;p-MST1 /2 (T183, 180)

Biology Area: Apoptosis,Hypertrophy,Other Kinases

Research Background

The protein encoded by this gene is a cytoplasmic kinase that is structurally similar to the yeast Ste20p kinase, which acts upstream of the stress-induced mitogen-activated protein kinase cascade. The encoded protein can phosphorylate myelin basic protein and undergoes autophosphorylation. A caspase-cleaved fragment of the encoded protein has been shown to be capable of phosphorylating histone H2B. The particular phosphorylation catalyzed by this protein has been correlated with apoptosis, and it's possible that this protein induces the chromatin condensation observed in this process. [provided by RefSeq, Jul 2008]

Inhibitor · Natural Compounds · Compound Libraries · Recombinant Proteins

This product is for Research Use Only · Not for Human or Veterinary or Therapeutic Use

Tel:781-999-4286 E_mail:info@targetmol.com Address:34 Washington Street,Wellesley Hills,MA 02481